



ROAD CRASHES in South Australia

Statistical Summary of Road Crashes & Casualties in 2017



Government of South Australia

Department of Planning,
Transport and Infrastructure

Prepared by Department of Planning, Transport and Infrastructure

Only available in electronic format from the Department of Planning, Transport and Infrastructure's Road Safety website:
<http://dpti.sa.gov.au/towardszerotogether>

Further Information

For further information concerning road crash statistics for South Australia, write to the

Department of Planning, Transport and Infrastructure
GPO Box 1533,
ADELAIDE SA 5000
Email: DPTI.enquiriesadministrator@sa.gov.au

Full Title: Road Crashes in South Australia: Statistical Summary of Road Crashes & Casualties in 2017

Type of Report and Period Covered: Statistical, 2017

Pages: 63

Key Words: crash, crash rate, casualty, serious injury, injuries, age, blood alcohol concentration, day, hour, fatality, month, road user, severity, sex, vehicle movement, year, statistical

The data presented in this report is for information purposes only and should be used with care before drawing conclusions not contained in this report. Numbers may not match with future publications due to the database continually being updated with new information.

Summary Data for 2017

	Number
CRASHES	
Fatal Crashes	93
Serious Injury Crashes	533
Minor Injury Crashes	4 374
Property Damage Crashes	8 237
TOTAL	13 237
CASUALTIES	
Fatalities	100
Serious Injuries	622
Minor Injuries	5 515
TOTAL	6 237
OTHER DATA	
Vehicles on register¹	1 442 520
Fatalities per 10 000 vehicles	0.69
Serious Injuries per 10 000 vehicles	4.31
Casualties per 10 000 vehicles	43.24
Licence holders²	1 238 239
Driver/rider fatalities per 10 000 licence holders	0.57
Driver/rider serious injuries per 10 000 licence holders	3.38
Driver/rider casualties per 10 000 licence holders	34.05
Population³	1 723 548
Fatalities per 100 000 population	5.80
Serious Injuries per 100 000 population	36.09
Casualties per 100 000 population	361.87

¹ Excludes trailers, caravans, plant and equipment. Source: Registration and Licensing, Dept of Planning, Transport & Infrastructure, December 2017.

² No. of individual licence holders (inc learner permits). Source: Registration and Licensing, Dept of Planning, Transport & Infrastructure, December 2017.

³ Estimated resident population. Source: *Australian Demographic Statistics*, ABS, cat. no. 3101.0, June 2017.

Contents

SUMMARY DATA FOR 2017	1
KEY POINTS 2017	4
PREFACE	5
How crashes are processed?	5
Scope	5
Related Publications	5
Acknowledgements	5
Definitions & Explanatory Notes	6
CRASH AND CASUALTY TRENDS	
Table 1 Trends in South Australia, 1995 – 2017	9
Figure 1 <i>Data Trends in South Australia, 1995 – 2017</i>	10
Figure 2 <i>Fatality Rates in South Australia, 1995 – 2017</i>	10
Table 2 Comparison with other Australian States, 2017	11
Table 3 Road Crash Fatalities by Age Group compared with Deaths Registered in South Australia, 2017	11
Table 4 Casualties by Road User Type and Severity, 1995 – 2017	12
Table 5 Casualties by Age Group and Severity, 1995 – 2017	13
Table 6 Casualties by Sex and Severity, 1995 – 2017	14
Table 7 Crashes and Casualties by Region and Severity, 1995 – 2017	15
ROAD CRASHES in 2017	16
Time Distribution of Crashes	
Table 8 Crashes and Casualties during Holiday Periods by Severity	17
Table 9a Casualty Crashes by Time of Day, Day of Week	18
Figure 3 <i>Casualty Crashes by Time of Day, Day of Week</i>	18
Table 9b Casualties by Time of Day, Day of Week	19
Table 9c All Crashes by Time of Day, Day of Week	19
Table 10 Crashes and Casualties by Month of Year and Severity	19
Crash Type	
Table 11a Crashes and Casualties by Crash Type and Severity: <i>Metropolitan Adelaide</i>	20
Table 11b Crashes and Casualties by Crash Type and Severity: <i>Rural</i>	20
Table 11c Crashes and Casualties by Crash Type and Severity: <i>South Australia</i>	21
Table 12 Hit Fixed Object Crashes by Object First Hit and Severity	21
Table 13 Single Vehicle Crashes by Motor Vehicle Type and Severity	21
Figure 4 <i>Definition for Coding Accidents Table</i>	22
Table 14a Crashes and Casualties by DCA and Severity: <i>Metropolitan Adelaide</i>	23
Table 14b Crashes and Casualties by DCA and Severity: <i>Rural</i>	25
Table 14c Crashes and Casualties by DCA and Severity: <i>South Australia</i>	27
Location & Distribution of Crashes	
Table 15a Crashes and Casualties by Location Type and Severity: <i>Metropolitan Adelaide</i>	29
Table 15b Crashes and Casualties by Location Type and Severity: <i>Rural</i>	29
Table 15c Crashes and Casualties by Location Type and Severity: <i>South Australia</i>	30
Table 16a Crashes and Casualties by Traffic Control and Severity: <i>Metropolitan Adelaide</i>	30
Table 16b Crashes and Casualties by Traffic Control and Severity: <i>Rural</i>	31
Table 16c Crashes and Casualties by Traffic Control and Severity: <i>South Australia</i>	31
Table 17 Crashes and Casualties by Area Speed Limit, Region & Severity	32
Table 18 Crashes and Casualties by Light Conditions, Region & Severity	32
Table 19 Crashes and Casualties by Vertical Alignment, Region & Severity	33
Table 20 Crashes and Casualties by Horizontal Alignment, Region & Severity	33
Table 21 Crashes and Casualties by Road Moisture, Region & Severity	34
Table 22 Crashes and Casualties by Route and Severity	34
Table 23a Crashes and Casualties by Local Government Area and Severity: <i>Metropolitan Adelaide: Council Roads</i>	35
Table 23b Crashes and Casualties by Local Government Area and Severity: <i>Metropolitan Adelaide: DPTI Roads</i>	36
Table 23c Crashes and Casualties by Local Government Area and Severity: <i>Metropolitan Adelaide: All Roads</i>	37
Table 24a Crashes and Casualties by Local Government Area and Severity: <i>Rural: Council Roads</i>	38
Table 24b Crashes and Casualties by Local Government Area and Severity: <i>Rural: DPTI Roads</i>	40
Table 24c Crashes and Casualties by Local Government Area and Severity: <i>Rural: All Roads</i>	42
Table 25 Top Intersections with highest number of Casualty Crashes 2017	44

Motor Vehicle Type, Movement & Involvement		
Table 26	Motor Vehicles Involved in and Responsible for Crashes by Region and Severity	45
Table 27	Crashes and Casualties by Vehicle Movement of Motor Vehicle Responsible and Severity	46
Table 28	Crashes and Casualties by Pedestrian Responsible, Movement and Severity	46
Table 29	Crashes by Motor Vehicle Type Involved and Severity	47
Speed Involvement		
Table 30	Crashes and Casualties by Speed Involvement and Severity	47
 CASUALTIES in 2017		48
Road User		
Table 31	Casualties by Road User Type, Severity, Age & Sex	49
Table 32	Casualties by Unit Type and Severity	50
Table 33	Motor Vehicle Casualties by Position in Vehicle and Severity	50
Seatbelts & Helmets		
Table 34	Casualties by Road User Type, Safety Device and Severity	51
Alcohol		
Table 35	Driver and Motorcycle Rider Casualties with BAC	52
Drugs		
Table 36	Driver and Motorcycle Rider Casualties with Drugs	52
Responsibility		
Table 37a	Road User Involved in and Responsible for Crashes by Age & Sex: <i>Fatal Crashes</i>	53
Table 37b	Road User Involved in and Responsible for Crashes by Age & Sex: <i>Serious Injury Crashes</i>	54
Table 37c	Road User Involved in and Responsible for Crashes by Age & Sex: <i>Minor Injury Crashes</i>	55
Table 37d	Road User Involved in and Responsible for Crashes by Age & Sex: <i>Property Damage Crashes</i>	56
Table 37e	Road User Involved in and Responsible for Crashes by Age & Sex: <i>All Crashes</i>	57
Table 38	Drivers & Motorcycle Riders Involved in and Responsible for Crashes by Licence Type and Severity	58
Table 39a	Drivers & Motorcycle Riders Responsible for Crashes by Licence Type and Age: <i>Fatal Crashes</i>	58
Table 39b	Drivers & Motorcycle Riders Responsible for Crashes by Licence Type and Age: <i>Serious Injury Crashes</i>	59
Table 39c	Drivers & Motorcycle Riders Responsible for Crashes by Licence Type and Age: <i>Minor Injury Crashes</i>	59
Table 39d	Drivers & Motorcycle Riders Responsible for Crashes by Licence Type and Age: <i>Property Damage Crashes</i>	60
Table 39e	Drivers & Motorcycle Riders Responsible for Crashes by Licence Type and Age: <i>All Crashes</i>	60
 REFERENCE INFORMATION for South Australia		61
Demographic Data		
Table 40	Estimated Population by Age and Sex	62
Table 41	Licence and Permit Holders by Age and Sex	62
Vehicle Information		
Table 42	Motor Vehicle on Register by Vehicle Type	63
Table 43	Vehicle Kilometres Travelled by Vehicle Type	63

Key Points 2017

- A total of 13 237 crashes were processed for South Australia in 2017 – 93 fatal crashes, 533 serious injury crashes, 4 374 minor injury crashes and 8 237 property damage crashes. This resulted in 100 fatalities, 622 serious injuries and 5 515 minor injuries.
- The estimated cost of casualty crashes to the community in 2017 was \$1.59 billion¹.
- The 100 fatalities that occurred in 2017 resulted in a fatality rate per 100 000 population of 5.8, higher than the national average of 5.0
- **Greater Adelaide Area** – The number of fatal crashes increased in 2017 compared to 2016, and the number of serious injury crashes decreased. There were 54 fatal crashes, 22 more than in 2016 (32) and above the previous 5 year average of 39. This is a reversal from the previous 5 years which saw a decline of fatal crashes in the Greater Adelaide area. There were 322 serious injury crashes in 2017 compared to 339 in 2016, and also fewer than the previous 5 year average of 370 (2012-2016). 31% of fatal crashes in Greater Adelaide were at intersections, a decrease from 41% in 2016.
- **Rural areas** – Fatal and serious injury crashes have decreased in rural areas in 2017 compared to 2016. Rural fatal crashes have decreased from 45 in 2016 to 39 in 2017 and also well below the 5 year average of 50. Serious injury crashes have declined from 235 in 2016 to 211 in 2017 (5 year average of 255). 59% of fatal crashes in rural areas were single vehicle crashes such as the vehicle rolling over or hitting objects such as trees, a slight increase from 56% in 2016.
- **Young road users** – The number of 16-19 year old fatalities increased from 3 in 2016 to 8 in 2017, and the number of 20-24 year old fatalities remained the same, 12 were killed in 2017. In contrast, the number of serious injuries in the 16 -19 year age group decreased from 81 in 2016 to 43 in 2017, and below the 5 year average of 72 (2012-2016). There was also a decrease in serious injuries for the 20-24 year old age group from 86 in 2016 to 56 in 2017, but still well below the 5 year average of 91 (2012-2016).
- **Older road users** – The number of fatalities of people aged 70 or over has remained somewhat stable over the past 5 years. 25 people in this age group were killed in 2017 two more than in 2016 and the 5 year average of 23 fatalities. In contrast, the number of people seriously injured has increased in 2017, 110 serious injuries were recorded well above the 87 in 2016 and again above the 5 year average of 76 serious injuries.
- **Drivers** – Driver fatalities increased in 2017 compared to 2016 and serious injuries have decreased. The number of fatalities of light vehicle drivers increased to 45 in 2017 compared to 36 in 2016 and an average of 46 (2012-2016). In contrast, there was one heavy vehicle driver death compared to 5 in 2016 and a 5 year average of 3 per year (2012-2016). The number of drivers seriously injured fell in 2017 compared to 2016, however there was a slight increase in the number of heavy vehicle drivers seriously injured.
- **Motorcyclists** – Fatalities increased substantially in 2017 compared to previous years and serious injuries declined slightly. 24 motorcyclists were killed in 2017, this is the highest number of fatalities seen for this group since 1993. 8 fatalities were recorded in 2016 and the 5 year average is 11 deaths. Serious injuries have seen a very slight decline in 2017 to 108 compared to 109 in 2016 and an average of 127 (2012-2016).
- **Pedestrians** – Fatalities have increased from 9 in 2016 to 17 in 2017 and is also just above the previous 5 year average (2012-2016) of 14 fatalities. Pedestrian serious injuries decreased from 66 in 2016 to 41 in 2017, also below the previous 5 year average of 68 (2012-2016).
- **Seatbelts** – 38% of driver and passenger fatalities in 2017 were not wearing a seatbelt at the time of the crash. A significant increase compared to 14% in 2016 and a previous 5 year average of 27% (2012-2016).

¹ Calculated using *Willingness to Pay* method

Preface

This publication presents information compiled from police reported crashes in South Australia for 2017 and is the fiftieth edition in an annual series that commenced with 1967 data.

How crashes are reported and processed?

When a reportable road crash occurs, South Australia Police (SAPOL) collect the data through vehicle crash reports, which are entered into SAPOL's SHIELD system. The reports are then electronically forwarded to the Safe Systems and Crash Investigation Unit of the Department of Planning, Transport and Infrastructure (DPTI) for further processing and geocoding. The information is checked for accuracy and consistency to ensure the reliability of any published statistics. Processed crash data is stored in the DPTI 'Road Crash Database' (TARS).

The data presented in this report is for information purposes only and should be used with care before drawing conclusions not contained in this report. Details in this publication may differ from information previously released or published due to the database continually being updated with new information. Road crash information contained in this publication is derived from TARS.

Please note data reported within this publication is correct at the time of extraction. Due to continual quality assurances and process updates historical data may not match previous publications.

Scope

Note: The following changes were made to the Property Damage Only (PDO) definition in 2003, 2013, 2016 and 2017:

1 January 2017

The Department of Planning, Transport and Infrastructure (DPTI) processed all casualty crashes and only 'property damage' crashes involving any type of vehicle towed away from the crash or where involving:

- A motorcycle (includes quad bikes), motor scooter, motorised bicycle and regular bicycle, regardless of whether another vehicle was involved.
- Any type of heavy vehicle with a GVML \geq 4.5 tonnes or a bus with 13 seats or more.
- A train or tram colliding with a vehicle or pedestrian within the road related area.
- Any type of vehicle colliding with a pedestrian.

1 December 2016

DPTI processed all 'property damage' crashes for the month of December 2016 in accordance with the Australian Transport Safety Bureau (ATSB) guidelines.

Prior to 1 December 2016, the crash statistics included in this publication were confined to those crashes which:

- were reported to SA Police (SAPOL) (excludes SAPOL online crash reporting);
- occurred on a road, defined in the Road Traffic Act 1961;
- were defined by the ATSB publication "Guidelines For Determining Events as Road Crashes in Australia" (published March 2000);
- involved at least one moving vehicle;
- involved at least one person being killed or injured, vehicle towed away, or total property damage of \$5000 or greater; and
- included all crashes involving bicycles, motorcycles and scooters (irrespective of damage value or injury level).

1 January 2013

DPTI only processed 'property damage' crashes with an aggregated damage value of \$5000 or greater, or where a vehicle was towed away.

1 July 2003

DPTI only processed 'property damage' crashes where the value was \$3000, or where a vehicle was towed away. Preceding this, the 'property damage' crash value was \$1000 introduced on 1 January 1998.

Related Publications

All monthly and annual statistical reports are available from DPTI's Road Safety website

http://towardszerotogether.sa.gov.au/road_crash_facts/sa_crashes

Road Fatalities in South Australia (monthly), Road Fatalities Involving Heavy Vehicles in South Australia (monthly)
Road Crash Serious Injuries in South Australia (monthly), Road Crash Serious Injuries Involving Heavy Vehicles in South Australia (monthly)
Road Crashes in South Australia annual reports, **South Australian Road Safety Progress Report (Quarterly), Road Safety Fact Sheets**

Acknowledgements

Acknowledgement is extended to the South Australia Police for supply of reported road crash reports.

Notes

From 1 January 2013, new ABS boundaries were introduced into the coding corresponding to the Greater Adelaide City Statistical Area replacing the previous metro/rural boundaries. As a consequence, Mt Barker and Adelaide Hills Council, part of Mallala, Barossa and Light Councils are now incorporated into Metropolitan Adelaide.

Definitions & Explanatory Notes

BAC	Blood Alcohol Concentration (mg/100mL).
Bicycle	Any two or three wheeled device operated by pedals and propelled by human power. Includes motorised bicycles.
Bicycle Rider	A person occupying the controlling position of a bicycle.
Bicyclist	A bicycle rider or passenger, often referred to as a cyclist.
Driver	A controller of a motor vehicle other than a motorcycle or bicycle.
Drug	Methamphetamine, MDMA (Ecstasy) and/or THC (cannabis).
DPTI	Department of Planning, Transport & Infrastructure.
Casualty	Any person killed or injured as a result of a crash.
Casualty Crash	Crash where someone had been killed or injured as a result of the crash.
DCA	Definition for Coding Accidents – a coding system to describe the events involved in a crash. The ‘crash-type’ is based on the traffic movements leading up to the crash. Participant intent, as well as actual movement, is used in determining the DCA crash type.
Fatal Crash	A crash for which there is at least one fatality.
Fatality	A person who dies within 30 days of a crash as a result of injuries sustained in that crash.
Heavy Vehicle	Heavy vehicle includes the following vehicle types: Rigid truck, Semi-Trailer, Bus, B Double and other defined special vehicle.
Intersection Crash	A crash for which the first impact occurs at or within a 20 metre radius of an intersection.
Metropolitan	Greater Adelaide City Statistical Area. Comprises of the following local government areas: Adelaide, Burnside, Campbelltown, Charles Sturt, Holdfast Shores, Marion, Mitcham, Norwood, Payneham & St Peters, Onkaparinga, Playford, Port Adelaide & Enfield, Prospect, Salisbury, Tea Tree Gully, Unley, Walkerville, West Torrens, Adelaide Hills, Mount Barker, Gawler and part of Barossa, Light and Mallala councils.
Mid-block Crash	A crash that occurs between two intersections.
Minor Injury	A person who sustains injuries requiring medical treatment, either by a doctor or in a hospital, as a result of a road crash, who was not admitted to hospital and who does not die as a result of those injuries within 30 days of the crash.
Minor Injury Crash	A crash in which at least one person sustains injury but no person is seriously injured or dies within 30 days of the crash.
Motor Vehicle	Any road vehicle which is mechanically or electrically powered but not operated on rails.
Motorcycle	Any mechanically or electrically propelled two or three wheeled vehicle with or without side-car; includes solo motorcycle, motorcycle with sidecar, motor scooter, mini-bike, and quad bikes.
Motorcycle Rider	A person occupying the controlling portion of a motorcycle.
Motorcyclist	Motorcycle rider or pillion passenger.
Other Road User	Occupants/controllers of animal drawn vehicles, ridden animals, railway vehicles, tram, and other defined special vehicle.
Other Vehicle Type	Animal drawn vehicles, ridden animals, railway vehicles, and tram.
Passenger	Any person, other than the controller, who is in, on, or falling from a road vehicle at the time of the crash, provided a portion of the person is in/on the road vehicle. It does not include those that are boarding or alighting a road vehicle at the time of the crash.
Passenger Vehicle	Includes all cars and car derivatives including 4WDs, vans, utilities and station wagons. Excludes heavy vehicles, light trucks (<4.5 tonnes), motorcycles and bicycles.

Pedestrian	Any person who is standing, walking, playing, lying on the road or alighting or boarding a road vehicle at the time of the crash. It does not include those that have fallen from a vehicle. Also includes riders and passengers of motorised wheelchairs/wheelchairs, small wheeled vehicles and gopher users.
Pillion Passenger	A passenger on but not controlling a motorcycle.
Property Damage Crash	A crash resulting in property damage in excess of the prescribed amount in which no person is injured or dies within 30 days of the crash.
Road Crash	Any apparent unpremeditated event reported to the police and resulting in death, injury or property damage in excess of the prescribed amount, and attributed to the movement of the road vehicle on a road.
Road User	Any person who is a pedestrian, rider, or the occupant of a road vehicle.
Rural	Area outside of metropolitan Adelaide. Comprises of the following local government areas: Ceduna, Cleve, Elliston, Franklin Harbor, Kimba, Lower Eyre Peninsula, Port Lincoln, Streaky Bay, Tumby Bay, Whyalla, Cooper Pedy, Finders Ranges, Port Augusta, Roxby Downs, Alexandrina, Kangaroo Island, Victor Harbor, Yankalilla, Grant, Mount Gambier, Naracoorte Lucindale, Robe, Tatiara, Wattle Range, Berri & Barmera, Karoonda East Murray, Loxton Waikerie, Mid Murray, Murray Bridge, Renmark Paringa, Southern Mallee, The Coorong, Barunga West, Calre & Gilbert Valleys, Copper Coast, Goyder, Mount Remarkable, Northern Areas, Orroroo/Carrieton, Peterborough, Port Pirie, Wakefield, Yorke Peninsula and part of Barossa, Light and Mallala councils.
Serious Casualty	A fatality or serious injury.
Serious Injury Crash	A non-fatal crash in which at least one person is seriously injured.
Serious Injury	A person who sustains injuries and is admitted to hospital for a minimum period of an overnight stay as a result of a road crash and who does not die as a result of those injuries within 30 days of the crash.
Serious Injury Crash	A non-fatal crash in which at least one person is seriously injured.
Vehicle Occupant	Driver or passenger within a motor vehicle.

Speed definition

Based on NSW Roads and Traffic Authority criteria for determining whether or not a crash is to be considered as having involved speed as a contributing factor. A motor vehicle is assessed as having been speeding if it satisfies the conditions described below:

- a) The vehicle's controller (driver or rider) was charged with a speeding offence; or the vehicle was described by police as travelling at excessive speed; or the stated speed of the vehicle was in excess of the speed limit; or the vehicle weight or the speed of the vehicle was faster than that allowed for the licence class of the driver or rider, or the vehicle weight, OR
- b) The vehicle was performing a manoeuvre characteristic of excessive speed, that is:
 - while on a curve the vehicle jack-knifed, skidded, slid or the controller lost control; or
 - the vehicle ran off the road while negotiating a bend or turning a corner and the controller was not distracted by something or disadvantaged by drowsiness or sudden illness; and
 - was not swerving to avoid another vehicle, animal or object and the vehicle did not suffer equipment failure.

CRASH & CASUALTY TRENDS

Historical Data
Fatality Rates
Interstate and International Comparisons
Causes of Death
Road User Type
Age & Sex
Region

Table 1: Trends in South Australia, 1995 – 2017

Year	Crashes						Casualties					Vehicles on Register ¹ ('000)	Licence Holders ² ('000)	Population ³ ('000)	Vehicle Kilometers Travelled ⁴ ('000 000)	Fatalities per		
	Fatal Crashes	Serious Injury Crashes	Minor Injury Crashes	TOTAL Casualty Crashes	Property Damage Crashes	ALL Crashes	Fatalities	Serious Injuries	Minor Injuries	ALL Casualties	10, 000 Vehicles					10,000 Licence Holders ⁵	100,000 Population	100, (M) Vehicle Kilometers Travelled
1995	164	1185	5097	6446	32844	39290	182	1521	6638	8341	945	975	1469	13195	1.93	0.98	12.39	1.38
1996	162	1324	5023	6509	32432	38941	181	1720	6775	8676	959	979	1474	-	1.89	1.09	12.28	-
1997	124	1168	5138	6430	32442	38872	149	1509	6716	8374	969	995	1479	-	1.54	0.80	10.07	-
1998	152	1225	5551	6928	32664	39592	168	1566	7345	9079	995	995	1487	13974	1.69	0.85	11.30	1.20
1999	132	1238	6047	7417	34287	41704	153	1607	8071	9831	1010	1012	1493	13081	1.52	0.85	10.25	1.17
2000	151	1229	6433	7813	33172	40985	166	1627	8501	10294	1011	1025	1498	13153	1.64	1.04	11.08	1.26
2001	137	1245	6351	7733	33041	40774	154	1603	8497	10254	1023	1045	1502	15085	1.51	0.85	10.25	1.02
2002	138	1199	6249	7586	32525	40111	154	1538	8382	10074	1045	1047	1522	14855	1.47	0.88	10.12	1.04
2003	135	1169	5786	7090	23220	30310	156	1470	7597	9223	1034	1052	1527	14963	1.51	0.85	10.21	1.04
2004	128	1071	5521	6720	15548	22268	139	1331	7297	8767	1049	1072	1534	15241	1.32	0.93	9.06	0.91
2005	126	994	5106	6226	14945	21171	147	1296	6629	8072	1065	1094	1542	14533	1.38	0.84	9.53	1.01
2006	104	1092	5009	6205	14513	20718	117	1358	6489	7964	1085	1042	1555	15535	1.08	0.77	7.53	0.75
2007	108	1090	5295	6493	15230	21723	125	1368	6961	8454	1107	1073	1585	14212	1.13	0.62	7.89	0.88
2008	87	996	5615	6698	15223	21921	99	1217	7174	8490	1171	1094	1602	-	0.85	0.56	6.18	-
2009	104	908	5213	6225	15506	21731	119	1108	6618	7845	1201	1135	1623	-	0.99	0.65	7.33	-
2010	105	886	5424	6415	15877	22292	118	1050	6907	8075	1226	1136	1645	14615	0.96	0.64	7.17	0.81
2011	95	781	5471	6347	16970	23317	103	932	6896	7931	1265	1141	1657	-	0.81	0.53	6.22	-
2012	86	637	5377	6100	16729	22829	94	761	6624	7479	1285	1155	1655	16313	0.73	0.56	5.68	0.58
2013	89	666	5037	5792	10883	16675	97	790	6290	7177	1305	1186	1671	-	0.74	0.51	5.80	-
2014	96	594	5005	5695	10467	16162	108	711	6163	6982	1322	1196	1686	16715	0.82	0.53	6.41	0.65
2015	96	657	4616	5369	10063	15432	102	759	5800	6661	1349	1204	1699	-	0.76	0.52	6.00	-
2016	77	574	4562	5213	11562	16775	86	692	5787	6565	1419	1225	1708	16915	0.61	0.51	5.03	0.51
2017	93	533	4374	5000	8237	13237	100	622	5515	6237	1442	1238	1723	-	0.69	0.57	5.80	-

¹ At December 2017. Excludes tractors, trailers, caravans, plant and equipment. Source: TRUMPS database, Registration & Licensing Section, DPTI

² At December 2017. Source: TRUMPS database, Registration & Licensing Section, DPTI

³ Population as of June 2017. Source: Australian Bureau of Statistics, *Australian Demographic Statistics*, cat.no. 3101.0.

⁴ Travel for the year ended June 2017. Source: Australian Bureau of Statistics, *Survey of Motor Vehicle Use*, cat. no. 9208.0.

⁵ Licence holder fatality rates are based on driver and rider fatalities only.

Note:

Changes were made to the Property Damage Only (PDO) definition in 2003, 2013, 2016 and 2017. Refer to **Scope**, page 5 for full details.

Figure 1: Data Trends in South Australia, 1995 - 2017

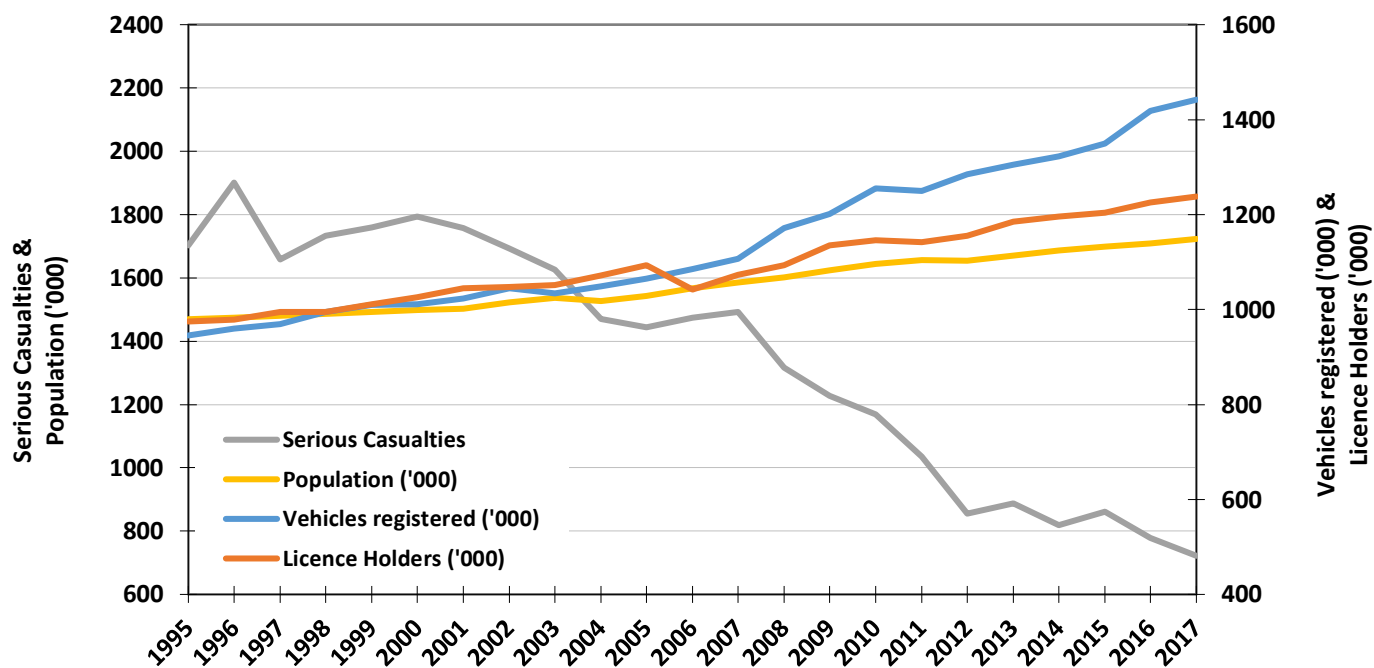
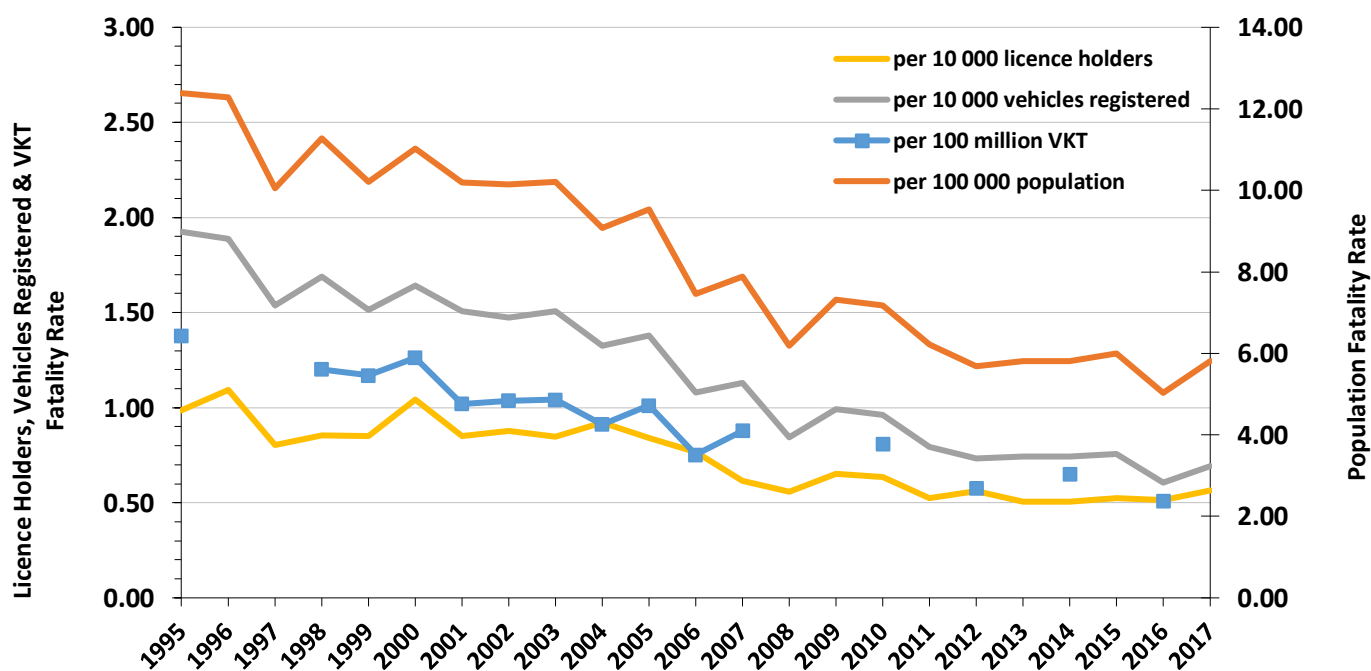


Figure 2: Fatality Rates in South Australia, 1995 - 2017



Note:

Changes were made to the Property Damage Only (PDO) definition in 1998, 2003, 2013, 2016 and 2017. Refer to **Scope**, page 5 for full details.

Table 2: Comparison with other Australian States¹, 2017

	Fatalities	Vehicles on register ² ('000)	Population ³ ('000)	Fatalities per 10 000 vehicles	Fatalities per 100 000 population
SOUTH AUSTRALIA	100	1,419	1717	0.69	5.80
New South Wales	393	5,374	7798	0.70	5.00
Victoria	254	4,681	6244	0.52	4.02
Queensland	247	3,854	4884	0.61	5.01
Western Australia	159	2,208	2568	0.71	6.16
Tasmania	36	458	519	0.75	6.91
Australian Capital Territory	5	288	406	0.17	1.22
Northern Territory	31	158	245	1.91	12.60
AUSTRALIA	1225	18440	24381	0.69	4.98

Table 3: Road Crash Fatalities by Age Group compared with Deaths Registered in South Australia, 2017

Age Groups	Deaths Registered in South Australia ⁴	Road Fatalities ⁵	
		Number	% of All Deaths
0-14	91	3	3%
15-19	33	8	24%
20-24	58	12	21%
25-29	53	8	15%
30-34	87	7	8%
35-39	112	3	3%
40-49	381	11	3%
50-59	823	11	1%
60-69	1,620	12	1%
70+	10,795	25	0%
Unknown	3	0	0%
TOTAL	14,056	100	1%

¹ Australian data based on information published by the Bureau of Infrastructure, Transport and Regional Economics (BITRE) for 2017 Statistical Summary.

² Australian figures (except SA) are as at January 2017. Source: Australian Bureau of Statistics, *Motor Vehicle Census Australia*, cat. no. 9309.0. These figures may not agree with registration statistics for individual States and Territories. Data for SA sourced from TRUMPS, as of December 2017.

³ Population as of June 2017. Source: Australian Bureau of Statistics, *Australian Demographic Statistics*, cat.no. 3101.0

⁴ Source: Australian Bureau of Statistics, *Deaths, Australia 2017*, cat.no. 3302.0.

⁵ Source: DPTI's TARS road crash database.

Note:

Changes were made to the Property Damage Only (PDO) definition in 1998, 2003, 2013, 2016 and 2017. Refer to **Scope**, page 5 for full details.

Table 4: Casualties by Road User Type and Severity, 1995 - 2017

Year	Vehicle Occupant						Motorcyclist						Pedestrian			Bicyclist			Other Road User			ALL ROAD USERS		
	Driver			Passenger			Rider			Pillion Passenger			F	SI	MI	F	SI	MI	F	SI	MI	F	SI	MI
	F	SI	MI	F	SI	MI	F	SI	MI	F	SI	MI												
1995	84	648	3571	36	432	1823	12	153	359	0	22	50	40	186	411	8	80	421	2	0	3	182	1521	6638
1996	92	779	3615	40	522	1922	15	189	365	3	14	33	24	153	428	7	59	403	0	4	9	181	1720	6775
1997	67	712	3724	44	408	1749	13	144	353	1	15	31	20	147	427	4	79	427	0	4	5	149	1509	6716
1998	72	779	4213	44	383	1972	13	157	314	0	20	26	35	142	402	4	79	408	0	6	10	168	1566	7345
1999	71	749	4749	38	456	2173	15	123	277	0	14	20	26	178	419	3	84	425	0	3	8	153	1607	8071
2000	91	739	5132	37	490	2191	16	158	323	0	12	25	21	151	409	1	75	412	0	2	9	166	1627	8501
2001	76	809	5023	32	419	2298	13	156	300	1	13	21	26	143	426	6	58	417	0	5	12	154	1603	8497
2002	72	753	5012	39	434	2196	20	153	321	1	7	22	19	129	425	3	59	402	0	3	4	154	1538	8382
2003	77	783	4663	44	343	1896	12	144	280	1	19	27	17	115	359	5	63	367	0	3	5	156	1470	7597
2004	80	687	4320	23	316	1915	20	157	288	1	9	20	12	104	369	3	57	382	0	1	3	139	1331	7297
2005	74	646	3943	39	342	1598	18	125	276	2	11	19	11	111	374	3	61	418	0	0	1	147	1296	6629
2006	58	670	3772	20	302	1586	22	178	322	1	17	22	12	111	365	4	80	419	0	0	3	117	1358	6489
2007	58	685	4011	37	347	1762	8	162	409	0	10	17	17	108	330	5	56	429	0	0	3	125	1368	6961
2008	45	582	4211	24	264	1720	16	176	435	1	8	23	12	120	334	1	67	447	0	0	4	99	1217	7174
2009	60	549	4010	32	243	1479	14	159	389	1	9	15	10	89	279	2	59	442	0	0	4	119	1108	6618
2010	57	500	4205	24	211	1574	16	146	388	0	7	20	16	103	245	5	82	470	0	1	5	118	1050	6907
2011	40	445	4236	22	193	1505	20	143	361	1	9	19	17	77	269	3	61	499	0	4	7	103	932	6896
2012	52	350	4027	14	137	1431	13	113	339	2	6	14	10	77	296	3	78	516	0	0	1	94	761	6624
2013	48	384	3860	17	122	1326	12	129	369	0	5	18	15	87	231	5	63	486	0	0	0	97	790	6290
2014	52	320	3779	24	135	1225	11	127	417	0	3	20	17	62	227	4	64	495	0	0	0	108	711	6163
2015	52	358	3444	17	132	1247	11	139	386	0	6	13	18	50	205	4	74	505	0	0	0	102	759	5800
2016	41	325	3495	23	140	1200	8	105	390	0	4	9	9	66	245	5	52	448	0	0	0	86	692	5787
2017	46	313	3351	11	121	1082	24	105	377	0	3	9	17	41	246	2	39	450	0	0	0	100	622	5515

F – Fatality, SI – Serious Injury, MI – Minor Injury

Note:

Changes were made to the Property Damage Only (PDO) definition in 1998, 2003, 2013, 2016 and 2017. Refer to **Scope**, page 5 for full details.

Table 5: Casualties by Age Group and Severity, 1995 – 2017

Year	0-15			16-19			20-24			25-29			30-39			40-49			50-59			60-69			70+			Unknown			ALL CASUALTIES		
	F	SI	MI	F	SI	MI	F	SI	MI	F	SI	MI	F	SI	MI	F	SI	MI	F	SI	MI	F	SI	MI	F	SI	MI	F	SI	MI	F	SI	MI
1995	14	132	597	22	225	884	24	255	1094	16	168	716	39	226	1056	18	154	807	10	94	450	19	69	308	20	99	330	0	99	396	182	1521	6638
1996	12	162	642	18	230	931	27	279	1002	21	203	708	26	267	1155	23	160	824	12	98	475	15	101	286	26	118	362	1	102	390	181	1720	6775
1997	8	149	603	19	194	840	21	233	973	13	149	718	28	255	1127	11	150	866	11	91	524	12	79	307	24	110	350	2	99	408	149	1509	6716
1998	10	134	623	18	251	979	17	212	1099	12	172	820	25	225	1207	21	181	889	12	103	555	14	66	315	37	120	346	2	102	512	168	1566	7345
1999	14	147	662	21	218	987	23	222	1056	11	136	904	22	225	1337	18	172	996	11	110	620	13	81	347	20	118	343	0	178	819	153	1607	8071
2000	11	121	547	26	212	1115	16	229	1180	23	158	893	21	225	1427	21	196	1042	10	113	698	14	81	396	24	111	376	0	181	827	166	1627	8501
2001	10	101	519	16	223	1092	14	210	1168	16	159	887	32	260	1405	14	192	1120	11	128	724	13	72	346	28	80	388	0	178	848	154	1603	8497
2002	16	107	461	16	198	1142	18	213	1159	17	164	875	28	241	1385	24	177	1088	10	104	680	5	54	349	20	108	416	0	172	827	154	1538	8382
2003	11	81	434	21	189	993	20	225	1060	11	147	750	26	244	1282	19	182	1081	18	119	701	10	62	329	20	100	331	0	121	636	156	1470	7597
2004	7	64	423	7	199	905	27	212	1045	17	135	652	26	207	1204	18	169	961	17	98	626	11	56	351	9	84	369	0	107	761	139	1331	7297
2005	8	86	349	18	173	874	28	195	920	19	115	616	16	205	1099	19	157	956	11	121	626	11	77	341	17	94	315	0	73	533	147	1296	6629
2006	3	74	441	12	181	707	17	186	932	11	129	610	17	225	1028	23	181	901	14	122	681	10	70	355	10	88	344	0	102	490	117	1358	6489
2007	6	60	402	18	173	804	16	210	970	14	137	703	14	214	1102	13	167	982	10	139	691	5	73	352	29	100	388	0	95	567	125	1368	6961
2008	5	51	439	16	157	812	12	177	921	10	114	700	19	211	1156	9	164	1064	13	110	797	4	75	434	11	91	365	0	67	486	99	1217	7174
2009	4	60	393	20	138	765	22	138	827	10	124	682	17	179	1120	20	132	1040	12	112	728	2	81	417	12	94	320	0	50	326	119	1108	6618
2010	5	49	397	19	110	737	12	131	846	5	121	740	16	145	1156	22	155	1013	17	112	879	8	72	406	14	120	381	0	35	352	118	1050	6907
2011	4	43	388	6	94	694	5	127	937	9	95	688	22	146	1177	22	141	1055	12	106	833	4	77	460	19	73	390	0	30	274	103	932	6896
2012	3	32	393	7	76	616	10	104	837	7	75	695	9	106	1139	16	112	997	11	91	785	9	70	464	22	73	423	0	22	275	94	761	6624
2013	6	37	349	2	50	569	13	93	757	5	81	692	6	112	1049	20	120	959	12	117	769	9	70	457	24	82	451	0	28	238	97	790	6290
2014	7	26	337	6	80	517	11	90	764	9	71	652	13	99	998	21	122	966	6	93	773	13	54	510	22	57	423	0	19	223	108	711	6163
2015	5	28	381	7	71	525	9	84	687	7	60	594	13	128	925	13	106	826	11	105	789	14	78	442	23	80	431	0	19	200	102	759	5800
2016	5	33	382	3	81	508	12	86	733	9	76	592	11	82	923	15	94	824	3	97	711	5	51	481	23	87	438	0	5	195	86	692	5787
2017	3	26	411	8	43	487	12	56	581	8	54	560	10	81	833	11	83	806	11	88	701	12	60	450	25	110	438	0	21	248	100	622	5515

F – Fatality, SI – Serious Injury, MI – Minor Injury

Note:

Changes were made to the Property Damage Only (PDO) definition in 1998, 2003, 2013, 2016 and 2017. Refer to **Scope**, page 5 for full details.

Table 6: Casualties by Sex and Severity, 1995 – 2017

Year	Male			Female			Unknown			ALL PERSONS		
	F	SI	MI	F	SI	MI	F	SI	MI	F	SI	MI
1995	130	967	3233	52	553	3355	0	1	50	182	1521	6638
1996	132	1046	3170	48	669	3571	1	5	34	181	1720	6775
1997	98	947	3173	51	554	3488	0	8	55	149	1509	6716
1998	111	941	3277	55	605	3897	2	20	171	168	1566	7345
1999	96	965	3715	56	613	4192	1	29	164	153	1607	8071
2000	121	981	3914	45	626	4479	0	20	108	166	1627	8501
2001	113	974	3929	41	621	4504	0	8	64	154	1603	8497
2002	117	961	3951	37	574	4426	0	3	5	154	1538	8382
2003	109	914	3596	47	552	3995	0	4	6	156	1470	7597
2004	111	823	3467	28	507	3808	0	1	22	139	1331	7297
2005	108	831	3284	39	464	3320	0	1	25	147	1296	6629
2006	89	873	3082	28	485	3401	0	0	6	117	1358	6489
2007	94	871	3315	31	497	3621	0	0	25	125	1368	6961
2008	74	758	3369	25	459	3794	0	0	11	99	1217	7174
2009	92	702	3182	27	404	3419	0	2	17	119	1108	6618
2010	75	663	3259	43	386	3635	0	1	13	118	1050	6907
2011	76	584	3278	27	348	3610	0	0	8	103	932	6896
2012	72	499	3150	22	262	3464	0	0	10	94	761	6624
2013	68	502	2940	29	288	3338	0	0	12	97	790	6290
2014	76	472	2922	32	239	3239	0	0	2	108	711	6163
2015	66	502	2773	36	256	3021	0	1	6	102	759	5800
2016	56	430	2800	30	262	2975	0	0	12	86	692	5787
2017	80	391	2689	20	231	2816	0	0	10	100	622	5515

F – Fatality, SI – Serious Injury, MI – Minor Injury

Note:

Changes were made to the Property Damage Only (PDO) definition in 1998, 2003, 2013, 2016 and 2017. Refer to **Scope**, page 5 for full details.

Table 7: Crashes and Casualties by Region¹ and Severity, 1995 – 2017

Year	Metropolitan Adelaide ¹									Rural South Australia ¹								
	Crashes					Casualties				Crashes					Casualties			
	Fatal Crashes	Serious Injury Crashes	Minor Injury Crashes	Property Damage Crashes	ALL CRASHES	Fatalities	Serious Injuries	Minor Injuries	ALL CASUALTIES	Fatal Crashes	Serious Injury Crashes	Minor Injury Crashes	Property Damage Crashes	ALL CRASHES	Fatalities	Serious Injuries	Minor Injuries	ALL CASUALTIES
1995	77	677	4120	27726	32600	77	817	5152	6046	87	509	978	5122	6696	105	704	1486	2295
1996	68	700	4031	27232	32031	73	861	5206	6140	94	625	991	5194	6904	108	860	1568	2536
1997	52	665	4199	27194	32110	55	800	5294	6149	72	504	928	5231	6735	94	711	1410	2215
1998	65	698	4579	27285	32627	70	855	5868	6793	87	527	970	5360	6944	98	710	1474	2282
1999	56	674	5091	28790	34611	61	830	6618	7509	76	564	956	5499	7095	92	777	1454	2323
2000	63	681	5423	28055	34222	68	842	6983	7893	88	548	1009	5117	6762	98	785	1516	2399
2001	64	647	5369	27988	34068	67	768	6950	7785	73	598	983	5051	6705	87	835	1548	2470
2002	49	621	5218	27582	33470	54	754	6743	7551	89	578	1031	4942	6640	100	784	1639	2523
2003	57	585	4839	19316	24797	62	731	6188	6981	78	584	947	3902	5511	94	739	1409	2242
2004	61	577	4583	12713	17934	64	692	5903	6659	67	494	938	2835	4334	75	639	1394	2108
2005	47	513	4212	12225	16997	51	620	5300	5971	79	481	894	2720	4174	96	676	1329	2101
2006	50	619	4146	11919	16734	54	730	5159	5943	54	473	863	2594	3984	63	628	1330	2021
2007	45	614	4380	12504	17543	49	722	5565	6336	63	476	915	2726	4180	76	646	1396	2118
2008	40	557	4643	12516	17756	44	649	5766	6459	47	439	972	2707	4165	55	568	1408	2031
2009	36	494	4287	12640	17457	41	565	5314	5920	68	414	926	2866	4274	78	543	1304	1925
2010	44	478	4505	12971	17998	45	531	5632	6208	61	408	919	2906	4294	73	519	1275	1867
2011	41	419	4572	14088	19120	42	472	5603	6117	54	362	899	2883	4198	61	460	1293	1814
2012	29	347	4464	13915	18755	31	384	5378	5793	57	290	913	2814	4074	63	377	1246	1686
2013	41	394	4379	9242	14056	43	459	5375	5877	48	272	658	1641	2619	54	331	915	1300
2014	37	346	4328	8920	13631	38	376	5203	5617	59	248	677	1549	2533	70	335	960	1365
2015	43	391	3916	8613	12963	43	428	4800	5271	53	266	700	1450	2469	59	331	1000	1390
2016	32	339	3881	9886	14138	34	382	4762	5178	45	235	681	1676	2637	52	310	1025	1387
2017	54	322	3703	6977	11056	56	359	4583	4998	39	211	671	1260	2181	44	263	932	1239

¹ From 2013 onwards, regional boundaries have been adjusted to the new ABS Greater Adelaide Statistical Division – For more information please look at *Preface* and *Definitions & Explanatory Notes*

Note:

Changes were made to the Property Damage Only (PDO) definition in 1998, 2003, 2013, 2016 and 2017. Refer to **Scope**, page 5 for full details.

Road Crashes in 2017

Time Distribution
Crash Types
Definition for Coding Accidents
Crash Location
Top Intersections
Motor Vehicle Types
Involvement and Responsibility
Speed

Table 8: Crashes and Casualties during Holiday Periods by Severity

Period	Crashes				ALL CRASHES	Casualties			ALL CASUALTIES
	Fatal Crashes	Serious Injury Crashes	Minor Injury Crashes	Property Damage Crashes		Fatalities	Serious Injuries	Minor Injuries	
New Year (1 January) (1 day)	0	1	9	7	17	0	1	16	17
Australia Day Weekend (25 January – 27 January) (3 day)	1	3	38	57	99	2	4	42	48
Adelaide Cup (13 March – 15 March) (3 days)	0	5	46	66	117	0	6	61	67
Easter (14 April – 17 April) (4 days)	0	8	23	54	85	0	8	39	47
Anzac Day (25 April) (1 day)	1	1	2	18	22	1	1	3	5
Queens Birthday (11 June – 13 June) (3 days)	2	3	35	76	116	2	3	47	52
Labour Day (1 October – 3 October) (3 days)	1	4	31	63	99	1	4	35	40
Christmas/New Year (23 December – 3 January 2018) (12 days)	3	9	106	184	302	3	11	131	145
SCHOOL HOLIDAYS									
January (1 January – 29 January) (29 days)	4	45	315	559	923	5	54	406	465
April (15 April – 30 April) (16 days)	5	30	131	320	486	6	34	186	226
July (8 July – 23 July) (16 days)	4	15	155	341	515	4	15	193	212
September (30 September – 15 October) (16 days)	3	22	154	338	517	4	26	202	232
December (16 December – 31 December) (16 days)	6	20	172	296	494	6	22	220	248

Table 9a: Casualty Crashes by Time of Day, Day of Week

Time Period	Day of Week							TOTAL
	Monday	Tuesday	Wednesday	Thursday	Friday	Saturday	Sunday	
00:00 - 01:59	8	9	9	12	9	18	25	90
02:00 - 03:59	3	4	6	6	8	12	11	50
04:00 - 05:59	11	11	9	5	11	18	10	75
06:00 - 07:59	64	70	54	54	51	28	22	343
08:00 - 09:59	113	125	129	112	112	52	34	677
10:00 - 11:59	72	78	87	77	94	85	83	576
12:00 - 13:59	77	69	89	89	77	86	109	596
14:00 - 15:59	112	119	139	117	128	81	70	766
16:00 - 17:59	151	173	137	150	141	89	76	917
18:00 - 19:59	80	69	83	83	86	41	41	483
20:00 - 21:59	47	35	30	41	53	35	34	275
22:00 - 23:59	14	16	17	20	34	26	25	152
TOTAL	752	778	789	766	804	571	540	5000

Figure 3: Casualty Crashes by Time of Day, Day of Week

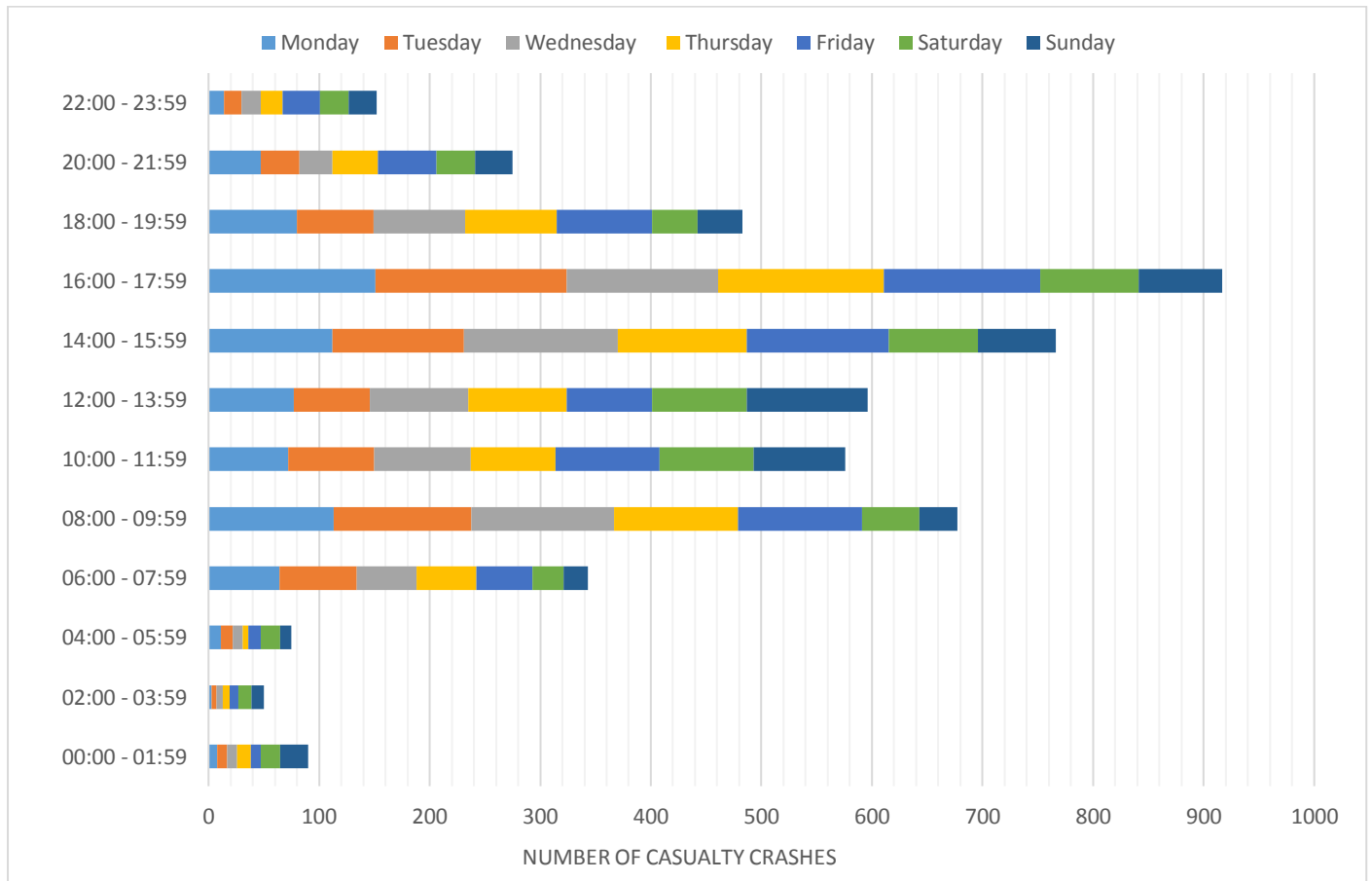


Table 9b: Casualties by Time of Day, Day of Week

Time Period	Day of Week							TOTAL
	Monday	Tuesday	Wednesday	Thursday	Friday	Saturday	Sunday	
00:00 - 01:59	8	11	9	15	11	20	32	106
02:00 - 03:59	4	4	6	11	12	15	13	65
04:00 - 05:59	15	16	9	5	16	27	10	98
06:00 - 07:59	71	81	59	62	61	39	25	398
08:00 - 09:59	140	159	148	151	140	60	47	845
10:00 - 11:59	88	101	105	85	108	115	100	702
12:00 - 13:59	101	83	120	110	101	106	123	744
14:00 - 15:59	144	146	179	141	158	101	83	952
16:00 - 17:59	188	204	164	188	180	121	103	1148
18:00 - 19:59	104	84	105	98	108	60	61	620
20:00 - 21:59	54	41	37	51	68	62	46	359
22:00 - 23:59	20	20	24	21	46	38	31	200
TOTAL	937	950	965	938	1009	764	674	6237

Table 9c: All Crashes by Time of Day, Day of Week

Time Period	Day of Week							TOTAL
	Monday	Tuesday	Wednesday	Thursday	Friday	Saturday	Sunday	
00:00 - 01:59	36	30	24	40	29	61	75	295
02:00 - 03:59	18	12	15	20	23	47	47	182
04:00 - 05:59	37	30	32	32	40	37	40	248
06:00 - 07:59	154	164	164	170	148	71	68	939
08:00 - 09:59	281	314	333	308	305	134	91	1766
10:00 - 11:59	176	215	248	210	218	224	191	1482
12:00 - 13:59	207	220	229	224	219	244	235	1578
14:00 - 15:59	283	326	327	318	365	189	162	1970
16:00 - 17:59	367	387	355	409	399	211	186	2314
18:00 - 19:59	168	174	184	211	237	133	126	1233
20:00 - 21:59	102	89	104	116	124	108	96	739
22:00 - 23:59	53	43	56	70	112	91	66	491
TOTAL	1882	2004	2071	2128	2219	1550	1383	13237

Table 10: Crashes and Casualties by Month of Year and Severity

Month	Crashes				ALL CRASHES	Casualties			
	Fatal Crashes	Serious Injury Crashes	Minor Injury Crashes	Property Damage Crashes		Fatalities	Serious Injuries	Minor Injuries	ALL CASUALTIES
January	4	46	337	599	986	5	56	431	492
February	4	35	377	640	1056	4	37	461	502
March	8	66	439	726	1239	8	77	554	639
April	7	42	303	621	973	8	50	414	472
May	5	58	422	780	1265	5	65	505	575
June	8	43	384	721	1156	9	54	473	536
July	11	50	322	675	1058	11	60	410	481
August	14	39	348	760	1161	15	46	426	487
September	6	43	351	665	1065	6	46	437	489
October	8	39	331	719	1097	9	46	422	477
November	9	29	397	665	1100	11	37	510	558
December	9	43	363	666	1081	9	48	472	529
TOTAL	93	533	4374	8237	13237	100	622	5515	6237

Table 11a: Crashes and Casualties by Crash Type and Severity:
Metropolitan Adelaide

Crash Type	Crashes				Casualties				
	Fatal Crashes	Serious Injury Crashes	Minor Injury Crashes	Property Damage Crashes	ALL CRASHES	Fatalities	Serious Injuries	Minor Injuries	ALL CASUALTIES
MULTI VEHICLE									
Head On	3	18	64	82	167	4	26	126	156
Rear End	1	41	1296	1920	3258	1	45	1558	1604
Side Swipe	3	20	273	968	1264	3	22	308	333
Right Angle	6	45	729	1308	2088	6	50	999	1055
Right Turn	3	36	369	564	972	4	43	509	556
Hit Parked Vehicle	2	17	164	705	888	2	20	183	205
Sub-total	18	177	2895	5547	8637	20	206	3683	3909
SINGLE VEHICLE									
Hit Fixed Object	17	77	404	1110	1608	17	85	472	574
Hit Pedestrian	15	36	206	104	361	15	36	221	272
Hit Animal	0	2	7	26	35	0	2	8	10
Hit Object on Road	0	4	11	21	36	0	4	12	16
Roll Over	4	21	154	87	266	4	21	159	184
Left Road Out of Control	0	2	12	32	46	0	2	14	16
Other	0	3	14	50	67	0	3	14	17
Sub-total	36	145	808	1430	2419	36	153	900	1089
TOTAL	54	322	3703	6977	11056	56	359	4583	4998

Table 11b: Crashes and Casualties by Crash Type and Severity:
Rural

Crash Type	Crashes				Casualties				
	Fatal Crashes	Serious Injury Crashes	Minor Injury Crashes	Property Damage Crashes	ALL CRASHES	Fatalities	Serious Injuries	Minor Injuries	ALL CASUALTIES
MULTI VEHICLE									
Head On	6	20	30	28	84	6	33	64	103
Rear End	1	14	54	108	177	1	17	87	105
Side Swipe	1	4	26	76	107	1	4	32	37
Right Angle	6	25	114	204	349	9	40	185	234
Right Turn	0	3	15	38	56	0	5	30	35
Hit Parked Vehicle	0	3	26	65	94	0	3	27	30
Sub-total	14	69	265	519	867	17	102	425	544
SINGLE VEHICLE									
Hit Fixed Object	15	60	209	387	671	17	71	265	353
Hit Pedestrian	2	5	20	16	43	2	5	20	27
Hit Animal	1	11	16	111	139	1	12	17	30
Hit Object on Road	0	1	2	19	22	0	1	2	3
Roll Over	7	54	136	155	352	7	59	178	244
Left Road Out of Control	0	8	18	42	68	0	9	20	29
Other	0	3	5	11	19	0	4	5	9
Sub-total	25	142	406	741	1314	27	161	507	695
TOTAL	39	211	671	1260	2181	44	263	932	1239

Table 11c: Crashes and Casualties by Crash Type and Severity: South Australia

Crash Type	Crashes				Casualties				
	Fatal Crashes	Serious Injury Crashes	Minor Injury Crashes	Property Damage Crashes	ALL CRASHES	Fatalities	Serious Injuries	Minor Injuries	ALL CASUALTIES
MULTI VEHICLE									
Head On	9	38	94	110	251	10	59	190	259
Rear End	2	55	1350	2028	3435	2	62	1645	1709
Side Swipe	4	24	299	1044	1371	4	26	340	370
Right Angle	12	70	843	1512	2437	15	90	1184	1289
Right Turn	3	39	384	602	1028	4	48	539	591
Hit Parked Vehicle	2	20	190	770	982	2	23	210	235
Sub-total	32	246	3160	6066	9504	37	308	4108	4453
SINGLE VEHICLE									
Hit Fixed Object	32	137	613	1497	2279	34	156	737	927
Hit Pedestrian	17	41	226	120	404	17	41	241	299
Hit Animal	1	13	23	137	174	1	14	25	40
Hit Object on Road	0	5	13	40	58	0	5	14	19
Roll Over	11	75	290	242	618	11	80	337	428
Left Road Out of Control	0	10	30	74	114	0	11	34	45
Other	0	6	19	61	86	0	7	19	26
Sub-total	61	287	1214	2171	3733	63	314	1407	1784
TOTAL	93	533	4374	8237	13237	100	622	5515	6237

Table 12: Hit Fixed Object Crashes by Object First Hit and Severity

Type of Fixed Object	Fatal Crashes	Serious Injury Crashes	Minor Injury Crashes	Property Damage Crashes	ALL CRASHES
Tree	16	69	255	411	751
Traffic Signal Pole	0	4	9	47	60
Pole - not Stobie	1	6	30	79	116
Bridge	0	1	3	7	11
Sign Post	0	3	26	59	88
Stobie Pole	1	14	80	171	266
Other Fixed Obstruction	11	30	165	596	802
Guard Rail	3	10	41	99	153
Wire Rope barrier	0	0	4	28	32
TOTAL	32	137	613	1497	2279

Table 13: Single Vehicle Crashes by Motor Vehicle Type and Severity

Vehicle Type	Fatal Crashes	Serious Injury Crashes	Minor Injury Crashes	Property Damage Crashes	ALL CRASHES
Passenger Vehicle	39	192	925	1921	3077
Light Truck (<4.5 Tonnes)	2	1	1	5	9
Heavy Vehicle (>= 4.5 Tonnes)	7	12	34	142	195
Buses	0	1	4	18	23
Motorcycles	13	65	175	75	328
Bicycles	0	15	74	10	99
Other	0	1	1	0	2
TOTAL	61	287	1214	2171	3733

Figure 4: Definition for Coding Accidents¹

Pedestrian on foot or in toy/pram	Vehicles from adjacent directions (intersections only)	Vehicles from opposing directions	Vehicles from same direction	Manoeuvring	Overtaking	On path	Off path on straight	Off path on curve	Passenger and miscellaneous
100 NEAR SIDE	110 CROSS TRAFFIC	120 HEAD ON (NOT OVERTAKING)	130 VEHICLES IN SAME LANES	140 U TURN	150 HEAD ON (INCL. SIDE SWIPE)	160 PARKED	170 OFF CARRIAGEWAY TOILET	180 OFF CARRIAGEWAY RIGHT BEND	190 FELL IN/FROM VEHICLE
101 EMERGING	111 RIGHT/FAR	121 RIGHT THRU	131 LEFT REAR	141 U TURN INTO FIXED OBJECT/PARKED VEHICLE	151 OUT OF CONTROL	161 DOUBLE PARKED	171 LEFT OFF CARRIAGEWAY INTO OBJECT/PARKED VEHICLE	181 OFF RIGHT BEND INTO OBJECT/PARKED VEHICLE	191 LOAD OR MISSILE STRUCK VEHICLE
102 FAR SIDE	112 LEFT/FAR	122 LEFT THRU	132 RIGHT END	142 LEAVING PARKING	152 PULLING OUT	162 ACCIDENT OR BROKEN DOWN	172 OFF CARRIAGEWAY TO RIGHT	182 OFF CARRIAGEWAY LEFT BEND	192 STRUCK TRAIN
103 Playing, working, lying, standing on carriageway	113 RIGHT NEAR	123 RIGHT LEFT	133 VEHICLES IN PARALLEL LANES	143 ENTERING PARKING	153 CUTTING IN	163 VEHICLE DOOR	173 RIGHT OFF CARRIAGEWAY INTO OBJECT/PARKED VEHICLE	183 OFF LEFT BEND INTO OBJECT/PARKED VEHICLE	193 STRUCK RAILWAY CROSSING FURNITURE
104 WALKING WITH TRAFFIC	114 TWO RIGHT TURNING	124 RIGHT RIGHT	134 LANE CHANGE RIGHT (NOT OVERTAKING)	144 PARKING VEHICLES ONLY	154 PULLING OUT - REAR END	164 PERMANENT OBSTRUCTION ON CARRIAGEWAY	174 OUT OF CONTROL ON CARRIAGEWAY	184 OUT OF CONTROL ON CARRIAGEWAY	194 PARKED CAR RUN AWAY
105 FACING TRAFFIC	115 RIGHT/LEFT FAR	125 LEFT LEFT	135 LANE CHANGE LEFT	145 REVERSING	155 TEMPORARY ROADWORKS	165 TEMPORARY ROADWORKS	175 OFF END OF ROAD/T IN INTERSECTION		
106 ON FOOTPATH/ MEDIAN	116 LEFT NEAR	126	136 RIGHT TURN SIDE SWIPE	146 REVERSING INTO FIXED OBJECT/PARKED VEHICLE INCLUDES DRIVEWAYS	156 STRUCK OBJECT ON CARRIAGEWAY	166 STRUCK OBJECT ON CARRIAGEWAY			
107 DRIVEWAY	117 RIGHT/LEFT NEAR	127	137 LEFT TURN SIDE SWIPE	147 EMERGING FROM DRIVEWAY/LANE	157 ANIMAL (NOT RIDDEN)	167 ANIMAL (NOT RIDDEN)			
108 STRUCK WHILE BOARDING OR ALIGHTING VEHICLE	118 TWO LEFT TURN	128	138	148 FROM FOOTWAY					
109 BOARDING & STRUCK BY SAME THIS INCLUDES WORKING/PARKING VEHICLE	119 OTHER ADJACENT	129 OTHER CROSSING	139 OTHER SAME DIRECTION	149 OTHER MANOEUVRING	159 OTHER OVERTAKING	169 HIT PARKED CAR OPPOSITE SIDE OF ROAD OTHER ON PATH	179 OTHER STRAIGHT	189 OTHER CURVE	199 UNKNOWN

¹ Definition for Coding Accidents – For more information please see Preface and Definitions & Explanatory Notes

Table 14a: Crashes and Casualties by DCA: Metropolitan Adelaide

Location Type	Crashes				ALL CRASHES	Casualties			
	Fatal Crashes	Serious Injury Crashes	Minor Injury Crashes	Property Damage Crashes		Fatalities	Serious Injuries	Minor Injuries	ALL CASUALTIES
PEDESTRIANS									
100	2	16	97	37	152	2	16	104	122
101	1	0	10	2	13	1	0	10	11
102	6	10	45	28	89	6	10	47	63
103	2	2	8	19	31	2	2	8	12
104	0	0	8	1	9	0	0	10	10
105	0	0	4	0	4	0	0	4	4
106	0	2	3	1	6	0	2	7	9
107	1	0	11	9	21	1	0	11	12
108	0	0	2	1	3	0	0	2	2
109	3	6	18	6	33	3	6	18	27
Sub-total	15	36	206	104	361	15	36	221	272
ADJ DIRECTIONS									
110	2	17	223	304	546	2	20	334	356
111	0	3	55	123	181	0	3	71	74
112	0	2	5	7	14	0	2	9	11
113	3	9	213	396	621	3	11	303	317
114	0	0	10	31	41	0	0	10	10
115	0	0	6	18	24	0	0	16	16
116	0	3	65	124	192	0	3	77	80
117	0	0	0	0	0	0	0	0	0
118	0	0	0	0	0	0	0	0	0
119	0	2	11	18	31	0	2	13	15
Sub-total	5	36	588	1021	1650	5	41	833	879
OPP DIRECTIONS									
120	4	19	63	73	159	5	28	125	158
121	2	35	361	539	937	3	42	501	546
122	0	0	0	1	1	0	0	0	0
123	0	1	0	15	16	0	1	0	1
124	0	0	1	4	5	0	0	1	1
125	0	0	0	0	0	0	0	0	0
129	0	1	1	3	5	0	1	1	2
Sub-total	6	56	426	635	1123	8	72	628	708
SAME DIRECTION									
130	1	36	992	1546	2575	1	39	1207	1247
131	0	2	138	126	266	0	3	150	153
132	0	4	166	194	364	0	4	202	206
133	1	7	41	180	229	1	7	44	52
134	0	1	32	210	243	0	1	35	36
135	0	2	46	236	284	0	3	53	56
136	1	1	18	41	61	1	1	19	21
137	0	2	45	87	134	0	2	47	49
139	0	2	2	21	25	0	2	4	6
Sub-total	3	57	1480	2641	4181	3	62	1761	1826
MANOEUVERING									
140	2	6	57	132	197	2	6	70	78
141	0	0	2	22	24	0	0	2	2
142	0	3	26	53	82	0	4	31	35
143	0	0	11	6	17	0	0	11	11
144	0	0	1	33	34	0	0	1	1
145	0	0	4	47	51	0	0	4	4

Table 14a: Crashes and Casualties by DCA: Metropolitan Adelaide (cont.)

Location Type	Crashes					Casualties			
	Fatal Crashes	Serious Injury Crashes	Minor Injury Crashes	Property Damage Crashes	ALL CRASHES	Fatalities	Serious Injuries	Minor Injuries	ALL CASUALTIES
146	1	0	8	47	56	1	0	11	12
147	0	5	88	193	286	0	5	106	111
148	1	2	23	33	59	1	2	23	26
149	0	0	10	28	38	0	0	12	12
Subtotal	4	16	230	594	844	4	17	271	292
OVERTAKING									
150	1	0	3	6	10	1	0	4	5
151	1	0	1	1	3	1	0	2	3
152	1	1	17	19	38	1	1	23	25
153	0	0	1	9	10	0	0	1	1
154	0	0	0	7	7	0	0	0	0
159	0	1	10	34	45	0	1	12	13
Sub-total	3	2	32	76	113	3	2	42	47
ON PATH									
160	2	13	118	528	661	2	16	133	151
161	0	0	0	0	0	0	0	0	0
162	0	0	4	5	9	0	0	6	6
163	0	1	22	26	49	0	1	23	24
164	0	0	5	18	23	0	0	5	5
165	0	1	1	2	4	0	1	1	2
166	0	3	8	19	30	0	3	8	11
167	0	2	7	26	35	0	2	8	10
169	0	3	13	51	67	0	3	13	16
Sub-total	2	23	178	675	878	2	26	197	225
OFF PATH STRAIGHT									
170	0	0	4	13	17	0	0	4	4
171	5	26	134	437	602	5	26	161	192
172	0	1	2	6	9	0	1	6	7
173	5	11	70	234	320	5	13	77	95
174	0	11	96	34	141	0	11	96	107
175	2	1	7	37	47	2	1	7	10
176	0	6	50	95	151	0	7	58	65
179	0	0	7	10	17	0	0	7	7
Sub-total	12	56	370	866	1304	12	59	416	487
OFF PATH CURVE									
180	0	1	11	12	24	0	1	12	13
181	3	18	81	147	249	3	20	96	119
182	0	3	9	17	29	0	3	9	12
183	1	13	57	108	179	1	15	62	78
184	0	3	25	10	38	0	3	25	28
189	0	0	2	0	2	0	0	2	2
Sub-total	4	38	185	294	521	4	42	206	252
MISCELLANEOUS									
190	0	1	3	4	8	0	1	3	4
191	0	0	2	25	27	0	0	2	2
192	0	1	0	2	3	0	1	0	1
193	0	0	0	8	8	0	0	0	0
194	0	0	2	14	16	0	0	2	2
199	0	0	1	18	19	0	0	1	1
Subtotal	0	2	8	71	81	0	2	8	10
TOTAL	54	322	3703	6977	11056	56	359	4583	4998

Table 14b: Crashes and Casualties by DCA: Rural

Location Type	Crashes				ALL CRASHES	Casualties			
	Fatal Crashes	Serious Injury Crashes	Minor Injury Crashes	Property Damage Crashes		Fatalities	Serious Injuries	Minor Injuries	ALL CASUALTIES
PEDESTRIANS									
100	0	2	7	4	13	0	2	7	9
101	0	0	0	0	0	0	0	0	0
102	0	0	4	2	6	0	0	4	4
103	0	0	1	1	2	0	0	1	1
104	0	0	2	0	2	0	0	2	2
105	0	0	0	0	0	0	0	0	0
106	0	1	1	0	2	0	1	1	2
107	1	0	2	4	7	1	0	2	3
108	0	0	0	0	0	0	0	0	0
109	1	2	3	6	12	1	2	3	6
Sub-total	2	5	20	17	44	2	5	20	27
ADJ DIRECTIONS									
110	2	11	46	78	137	4	17	76	97
111	0	1	3	20	24	0	1	5	6
112	0	0	1	2	3	0	0	1	1
113	3	8	39	38	88	4	15	68	87
114	0	0	2	0	2	0	0	4	4
115	0	0	0	3	3	0	0	0	0
116	1	0	5	15	21	1	0	5	6
117	0	0	0	0	0	0	0	0	0
118	0	0	0	0	0	0	0	0	0
119	0	0	0	2	2	0	0	0	0
Sub-total	6	20	96	158	280	9	33	159	201
OPP DIRECTIONS									
120	5	19	28	21	73	5	32	58	95
121	0	3	16	38	57	0	5	31	36
122	0	0	0	0	0	0	0	0	0
123	0	0	0	0	0	0	0	0	0
124	0	0	0	0	0	0	0	0	0
125	0	0	0	0	0	0	0	0	0
129	0	0	0	1	1	0	0	0	0
Sub-total	5	22	44	60	131	5	37	89	131
SAME DIRECTION									
130	0	11	25	59	95	0	14	47	61
131	0	0	6	8	14	0	0	9	9
132	1	3	24	37	65	1	3	32	36
133	0	1	2	10	13	0	1	2	3
134	0	0	2	5	7	0	0	4	4
135	0	0	2	2	4	0	0	2	2
136	0	0	0	1	1	0	0	0	0
137	0	0	1	4	5	0	0	1	1
139	0	0	1	1	2	0	0	1	1
Sub-total	1	15	63	127	206	1	18	98	117
MANOEUVERING									
140	1	1	9	19	30	1	3	13	17
141	0	0	0	1	1	0	0	0	0
142	0	1	1	11	13	0	1	1	2
143	0	0	1	0	1	0	0	1	1
144	0	1	0	8	9	0	1	0	1
145	0	0	1	3	4	0	0	1	1

Table 14b: Crashes and Casualties by DCA: Rural (cont.)

Location Type	Crashes					Casualties			
	Fatal Crashes	Serious Injury Crashes	Minor Injury Crashes	Property Damage Crashes	ALL CRASHES	Fatalities	Serious Injuries	Minor Injuries	ALL CASUALTIES
146	0	0	2	5	7	0	0	2	2
147	0	3	12	35	50	0	3	18	21
148	0	2	2	3	7	0	2	2	4
149	1	0	4	9	14	1	0	4	5
Subtotal	2	8	32	94	136	2	10	42	54
OVERTAKING									
150	1	1	2	6	10	1	1	6	8
151	1	5	3	3	12	1	5	4	10
152	0	1	6	20	27	0	1	7	8
153	0	0	0	1	1	0	0	0	0
154	0	1	0	1	2	0	1	0	1
159	0	1	2	9	12	0	1	2	3
Sub-total	2	9	13	40	64	2	9	19	30
ON PATH									
160	0	0	14	44	58	0	0	14	14
161	0	0	0	0	0	0	0	0	0
162	0	0	0	0	0	0	0	0	0
163	0	0	2	3	5	0	0	2	2
164	0	0	1	3	4	0	0	1	1
165	0	0	1	0	1	0	0	1	1
166	0	0	1	19	20	0	0	1	1
167	1	10	16	111	138	1	11	17	29
169	0	0	3	3	6	0	0	3	3
Sub-total	1	10	38	183	232	1	11	39	51
OFF PATH STRAIGHT									
170	0	7	7	21	35	0	8	8	16
171	4	13	50	124	191	5	20	73	98
172	0	3	11	15	29	0	3	21	24
173	1	15	39	92	147	1	17	44	62
174	1	14	29	39	83	1	14	37	52
175	1	3	8	16	28	1	3	8	12
176	1	16	56	65	138	1	17	68	86
179	0	0	2	2	4	0	0	2	2
Sub-total	8	71	202	374	655	9	82	261	352
OFF PATH CURVE									
180	2	7	29	28	66	2	8	38	48
181	4	22	54	68	148	4	25	73	102
182	0	6	10	26	42	0	6	12	18
183	4	7	35	55	101	5	7	40	52
184	2	6	28	19	55	2	8	34	44
189	0	0	0	1	1	0	0	0	0
Sub-total	12	48	156	197	413	13	54	197	264
MISCELLANEOUS									
190	0	1	4	0	5	0	1	4	5
191	0	2	1	7	10	0	3	1	4
192	0	0	2	0	2	0	0	3	3
193	0	0	0	2	2	0	0	0	0
194	0	0	0	0	0	0	0	0	0
199	0	0	0	1	1	0	0	0	0
Subtotal	0	3	7	10	20	0	4	8	12
TOTAL	39	211	671	1260	2181	44	263	932	1239

Table 14c: Crashes and Casualties by DCA: South Australia

Location Type	Crashes				ALL CRASHES	Casualties			
	Fatal Crashes	Serious Injury Crashes	Minor Injury Crashes	Property Damage Crashes		Fatalities	Serious Injuries	Minor Injuries	ALL CASUALTIES
PEDESTRIANS									
100	2	18	104	41	165	2	18	111	131
101	1	0	10	2	13	1	0	10	11
102	6	10	49	30	95	6	10	51	67
103	2	2	9	20	33	2	2	9	13
104	0	0	10	1	11	0	0	12	12
105	0	0	4	0	4	0	0	4	4
106	0	3	4	1	8	0	3	8	11
107	2	0	13	13	28	2	0	13	15
108	0	0	2	1	3	0	0	2	2
109	4	8	21	12	45	4	8	21	33
Sub-total	17	41	226	121	405	17	41	241	299
ADJ DIRECTIONS									
110	4	28	269	382	683	6	37	410	453
111	0	4	58	143	205	0	4	76	80
112	0	2	6	9	17	0	2	10	12
113	6	17	252	434	709	7	26	371	404
114	0	0	12	31	43	0	0	14	14
115	0	0	6	21	27	0	0	16	16
116	1	3	70	139	213	1	3	82	86
117	0	0	0	0	0	0	0	0	0
118	0	0	0	0	0	0	0	0	0
119	0	2	11	20	33	0	2	13	15
Sub-total	11	56	684	1179	1930	14	74	992	1080
OPP DIRECTIONS									
120	9	38	91	94	232	10	60	183	253
121	2	38	377	577	994	3	47	532	582
122	0	0	0	1	1	0	0	0	0
123	0	1	0	15	16	0	1	0	1
124	0	0	1	4	5	0	0	1	1
125	0	0	0	0	0	0	0	0	0
129	0	1	1	4	6	0	1	1	2
Sub-total	11	78	470	695	1254	13	109	717	839
SAME DIRECTION									
130	1	47	1017	1605	2670	1	53	1254	1308
131	0	2	144	134	280	0	3	159	162
132	1	7	190	231	429	1	7	234	242
133	1	8	43	190	242	1	8	46	55
134	0	1	34	215	250	0	1	39	40
135	0	2	48	238	288	0	3	55	58
136	1	1	18	42	62	1	1	19	21
137	0	2	46	91	139	0	2	48	50
139	0	2	3	22	27	0	2	5	7
Sub-total	4	72	1543	2768	4387	4	80	1859	1943
MANOEUVERING									
140	3	7	66	151	227	3	9	83	95
141	0	0	2	23	25	0	0	2	2
142	0	4	27	64	95	0	5	32	37
143	0	0	12	6	18	0	0	12	12
144	0	1	1	41	43	0	1	1	2
145	0	0	5	50	55	0	0	5	5

Table 14c: Crashes and Casualties by DCA: South Australia (cont.)

Location Type	Crashes				ALL CRASHES	Casualties			
	Fatal Crashes	Serious Injury Crashes	Minor Injury Crashes	Property Damage Crashes		Fatalities	Serious Injuries	Minor Injuries	ALL CASUALTIES
146	1	0	10	52	63	1	0	13	14
147	0	8	100	228	336	0	8	124	132
148	1	4	25	36	66	1	4	25	30
149	1	0	14	37	52	1	0	16	17
Subtotal	6	24	262	688	980	6	27	313	346
OVERTAKING									
150	2	1	5	12	20	2	1	10	13
151	2	5	4	4	15	2	5	6	13
152	1	2	23	39	65	1	2	30	33
153	0	0	1	10	11	0	0	1	1
154	0	1	0	8	9	0	1	0	1
159	0	2	12	43	57	0	2	14	16
Sub-total	5	11	45	116	177	5	11	61	77
ON PATH									
160	2	13	132	572	719	2	16	147	165
161	0	0	0	0	0	0	0	0	0
162	0	0	4	5	9	0	0	6	6
163	0	1	24	29	54	0	1	25	26
164	0	0	6	21	27	0	0	6	6
165	0	1	2	2	5	0	1	2	3
166	0	3	9	38	50	0	3	9	12
167	1	12	23	137	173	1	13	25	39
169	0	3	16	54	73	0	3	16	19
Sub-total	3	33	216	858	1110	3	37	236	276
OFF PATH STRAIGHT									
170	0	7	11	34	52	0	8	12	20
171	9	39	184	561	793	10	46	234	290
172	0	4	13	21	38	0	4	27	31
173	6	26	109	326	467	6	30	121	157
174	1	25	125	73	224	1	25	133	159
175	3	4	15	53	75	3	4	15	22
176	1	22	106	160	289	1	24	126	151
179	0	0	9	12	21	0	0	9	9
Sub-total	20	127	572	1240	1959	21	141	677	839
OFF PATH CURVE									
180	2	8	40	40	90	2	9	50	61
181	7	40	135	215	397	7	45	169	221
182	0	9	19	43	71	0	9	21	30
183	5	20	92	163	280	6	22	102	130
184	2	9	53	29	93	2	11	59	72
189	0	0	2	1	3	0	0	2	2
Sub-total	16	86	341	491	934	17	96	403	516
MISCELLANEOUS									
190	0	2	7	4	13	0	2	7	9
191	0	2	3	32	37	0	3	3	6
192	0	1	2	2	5	0	1	3	4
193	0	0	0	10	10	0	0	0	0
194	0	0	2	14	16	0	0	2	2
199	0	0	1	19	20	0	0	1	1
Subtotal	0	5	15	81	101	0	6	16	22
TOTAL	93	533	4374	8237	13237	100	622	5515	6237

Table 15a: Crashes and Casualties by Location Type and Severity:
Metropolitan Adelaide

Location Type	Crashes					Casualties			
	Fatal Crashes	Serious Injury Crashes	Minor Injury Crashes	Property Damage Crashes	ALL CRASHES	Fatalities	Serious Injuries	Minor Injuries	ALL CASUALTIES
INTERSECTION									
Interchange	0	1	4	16	21	0	1	4	5
Cross Road	9	66	961	1435	2471	9	74	1232	1315
Y-Junction	0	0	1	5	6	0	0	1	1
T-Junction	9	67	961	1638	2675	10	75	1227	1312
Multiple	0	5	29	55	89	0	6	36	42
Rail Xing	0	1	6	10	17	0	1	6	7
Sub-total	18	140	1962	3159	5279	19	157	2506	2682
MID BLOCK									
Crossover	0	0	2	0	2	0	0	2	2
Rail Crossing	0	2	5	16	23	0	2	8	10
Divided Road	13	54	787	1667	2521	14	58	941	1013
Not Divided	19	114	846	1950	2929	19	130	988	1137
One Way	0	0	5	10	15	0	0	6	6
Freeway	1	8	58	126	193	1	8	88	97
Ramp On	0	0	3	7	10	0	0	3	3
Ramp Off	0	1	2	12	15	0	1	2	3
Ped. Crossing	0	3	32	30	65	0	3	38	41
Other	3	0	1	0	4	3	0	1	4
Sub-total	36	182	1741	3818	5777	37	202	2077	2316
TOTAL	54	322	3703	6977	11056	56	359	4583	4998

Table 15b: Crashes and Casualties by Location Type and Severity:
Rural

Location Type	Crashes					Casualties			
	Fatal Crashes	Serious Injury Crashes	Minor Injury Crashes	Property Damage Crashes	ALL CRASHES	Fatalities	Serious Injuries	Minor Injuries	ALL CASUALTIES
INTERSECTION									
Interchange	0	0	0	0	0	0	0	0	0
Cross Road	2	21	87	157	267	4	30	135	169
Y- Junction	0	0	0	0	0	0	0	0	0
T-Junction	5	21	108	211	345	6	28	156	190
Multiple	1	0	1	6	8	1	0	1	2
Rail Xing	0	0	0	1	1	0	0	0	0
Sub-total	8	42	196	375	621	11	58	292	361
MID BLOCK									
Crossover	0	0	0	0	0	0	0	0	0
Rail Crossing	0	0	2	5	7	0	0	3	3
Divided Road	2	7	23	67	99	2	7	33	42
Not Divided	27	159	448	805	1439	29	195	595	819
One Way	0	0	0	2	2	0	0	0	0
Freeway	1	3	1	5	10	1	3	8	12
Ramp On	0	0	0	0	0	0	0	0	0
Pedestrian Crossing	0	0	1	1	2	0	0	1	1
Other Midblock	1	0	0	0	1	1	0	0	1
Sub-total	31	169	475	885	1560	33	205	640	878
TOTAL	39	211	671	1260	2181	44	263	932	1239

Table 15c: Crashes and Casualties by Location Type and Severity:
South Australia

Location Type	Crashes					Casualties			
	Fatal Crashes	Serious Injury Crashes	Minor Injury Crashes	Property Damage Crashes	ALL CRASHES	Fatalities	Serious Injuries	Minor Injuries	ALL CASUALTIES
INTERSECTION									
Interchange	0	1	4	16	21	0	1	4	5
Cross Road	11	87	1048	1592	2738	13	104	1367	1484
Y- Junction	0	0	1	5	6	0	0	1	1
T-Junction	14	88	1069	1849	3020	16	103	1383	1502
Multiple	1	5	30	61	97	1	6	37	44
Rail Crossing	0	1	6	11	18	0	1	6	7
Sub-total	26	182	2158	3534	5900	30	215	2798	3043
MID BLOCK									
Crossover	0	0	2	0	2	0	0	2	2
Rail Crossing	0	2	7	21	30	0	2	11	13
Divided Road	15	61	810	1734	2620	16	65	974	1055
Not Divided	46	273	1294	2755	4368	48	325	1583	1956
One Way	0	0	5	12	17	0	0	6	6
Freeway	2	11	59	131	203	2	11	96	109
Ramp On	0	0	3	7	10	0	0	3	3
Ramp Off	0	1	2	12	15	0	1	2	3
Ped. Crossing	0	3	33	31	67	0	3	39	42
Other	4	0	1	0	5	4	0	1	5
Sub-total	67	351	2216	4703	7337	70	407	2717	3194
TOTAL	93	533	4374	8237	13237	100	622	5515	6237

Table 16a: Crashes and Casualties by Traffic Control and Severity:
Metropolitan Adelaide

Location Type	Crashes					Casualties			
	Fatal Crashes	Serious Injury Crashes	Minor Injury Crashes	Property Damage Crashes	ALL CRASHES	Fatalities	Serious Injuries	Minor Injuries	ALL CASUALTIES
INTERSECTION									
Traffic Signals	8	61	817	1274	2160	8	71	1052	1131
Give Way Sign	0	15	260	415	690	0	19	345	364
Stop Sign	3	18	173	269	463	4	20	263	287
Roundabout	0	5	173	240	418	0	5	195	200
No Control	7	41	539	960	1547	7	42	651	700
Rail Xing-Boom	0	0	0	1	1	0	0	0	0
Sub-total	18	140	1962	3159	5279	19	157	2506	2682
MID BLOCK									
Traffic Signals	0	3	24	28	55	0	3	30	33
Give Way Sign	0	0	0	0	0	0	0	0	0
Stop Sign	0	0	0	0	0	0	0	0	0
Roundabout	0	0	3	2	5	0	0	6	6
No Control	36	177	1709	3772	5694	37	197	2033	2267
Rail Xing-Boom	0	2	2	6	10	0	2	3	5
Rail Xing-Flashing	0	0	0	1	1	0	0	0	0
Rail Xing-Traffic Signals	0	0	3	9	12	0	0	5	5
Sub-total	36	182	1741	3818	5777	37	202	2077	2316
TOTAL	54	322	3703	6977	11056	56	359	4583	4998

Table 16b: Crashes and Casualties by Traffic Control and Severity:
Rural

Traffic Control	Crashes					Casualties			
	Fatal Crashes	Serious Injury Crashes	Minor Injury Crashes	Property Damage Crashes	ALL CRASHES	Fatalities	Serious Injuries	Minor Injuries	ALL CASUALTIES
INTERSECTION									
Traffic Signals	0	2	11	31	44	0	2	12	14
Give Way Sign	6	21	82	115	224	9	32	137	178
Stop Sign	0	4	11	22	37	0	6	18	24
Roundabout	0	1	13	31	45	0	1	15	16
No Control	2	14	79	176	271	2	17	110	129
Sub-total	8	42	196	375	621	11	58	292	361
MID BLOCK									
Traffic Signals	0	0	1	1	2	0	0	1	1
Give Way Sign	0	0	2	0	2	0	0	3	3
Stop Sign	0	0	0	2	2	0	0	0	0
Roundabout	0	0	0	0	0	0	0	0	0
No Control	31	169	472	879	1551	33	205	636	874
Rail Xing-Boom	0	0	0	3	3	0	0	0	0
Rail Xing-Flashing	0	0	0	0	0	0	0	0	0
Rail Xing-Traffic Signals	0	0	0	0	0	0	0	0	0
Sub-total	31	169	475	885	1560	33	205	640	878
TOTAL	39	211	671	1260	2181	44	263	932	1239

Table 16c: Crashes and Casualties by Traffic Control and Severity:
South Australia

Traffic Control	Crashes					Casualties			
	Fatal Crashes	Serious Injury Crashes	Minor Injury Crashes	Property Damage Crashes	ALL CRASHES	Fatalities	Serious Injuries	Minor Injuries	ALL CASUALTIES
INTERSECTION									
Traffic Signals	8	63	828	1305	2204	8	73	1064	1145
Give Way Sign	6	36	342	530	914	9	51	482	542
Stop Sign	3	22	184	291	500	4	26	281	311
Roundabout	0	6	186	271	463	0	6	210	216
No Control	9	55	618	1136	1818	9	59	761	829
Rail Xing-Boom	0	0	0	1	1	0	0	0	0
Sub-total	26	182	2158	3534	5900	30	215	2798	3043
MID BLOCK									
Traffic Signals	0	3	25	29	57	0	3	31	34
Give Way Sign	0	0	2	0	2	0	0	3	3
Stop Sign	0	0	0	2	2	0	0	0	0
Roundabout	0	0	3	2	5	0	0	6	6
No Control	67	346	2181	4651	7245	70	402	2669	3141
Rail Xing-Boom	0	2	2	9	13	0	2	3	5
Rail Xing-Flashing	0	0	0	1	1	0	0	0	0
Rail Xing-Traffic Signals	0	0	3	9	12	0	0	5	5
Rail Xing-No Control	0	0	0	0	0	0	0	0	0
Other	0	0	0	0	0	0	0	0	0
Sub-total	67	351	2216	4703	7337	70	407	2717	3194
TOTAL	93	533	4374	8237	13237	100	622	5515	6237

Table 17: Crashes and Casualties by Area Speed Limit, Region & Severity

Area Speed Limit	Crashes				ALL CRASHES	Casualties			
	Fatal Crashes	Serious Injury Crashes	Minor Injury Crashes	Property Damage Crashes		Fatalities	Serious Injuries	Minor Injuries	ALL CASUALTIES
METROPOLITAN									
<50km/h	6	8	65	186	265	6	8	74	88
50km/h	11	74	925	1994	3004	11	79	1069	1159
60km/h	20	155	2078	3678	5931	20	171	2566	2757
70km/h	1	10	116	204	331	1	12	151	164
80km/h	8	43	344	555	950	8	50	464	522
90km/h	2	8	81	176	267	3	10	133	146
100km/h	4	16	63	111	194	4	21	79	104
110km/h	2	8	31	73	114	3	8	47	58
Sub-total	54	322	3703	6977	11056	56	359	4583	4998
RURAL									
<50km/h	2	3	7	11	23	2	3	7	12
50km/h	4	25	157	335	521	4	27	195	226
60km/h	1	17	71	162	251	1	18	91	110
70km/h	0	0	1	1	2	0	0	1	1
80km/h	3	10	58	118	189	3	13	78	94
90km/h	1	2	6	7	16	2	3	6	11
100km/h	12	96	221	352	681	15	120	314	449
110km/h	16	58	150	274	498	17	79	240	336
Sub-total	39	211	671	1260	2181	44	263	932	1239
TOTAL	93	533	4374	8237	13237	100	622	5515	6237

Table 18: Crashes and Casualties by Light Conditions, Region & Severity

Light Conditions ¹ & Region	Crashes				ALL CRASHES	Casualties			
	Fatal Crashes	Serious Injury Crashes	Minor Injury Crashes	Property Damage Crashes		Fatalities	Serious Injuries	Minor Injuries	ALL CASUALTIES
METROPOLITAN									
Daylight	30	227	2983	5315	8555	31	250	3666	3947
Night	24	95	720	1662	2501	25	109	917	1051
Sub-total	54	322	3703	6977	11056	56	359	4583	4998
RURAL									
Daylight	25	157	509	870	1561	28	197	702	927
Night	14	54	162	390	620	16	66	230	312
Sub-total	39	211	671	1260	2181	44	263	932	1239
TOTAL	93	533	4374	8237	13237	100	622	5515	6237

¹ Determined according to the schedule of sunrise and sunset times as published in the South Australian Government Gazette

Table 19: Crashes and Casualties by Vertical Alignment, Region & Severity

Vertical Alignment & Region	Crashes					Casualties			
	Fatal Crashes	Serious Injury Crashes	Minor Injury Crashes	Property Damage Crashes	ALL CRASHES	Fatalities	Serious Injuries	Minor Injuries	ALL CASUALTIES
METROPOLITAN									
Level	43	242	3166	6002	9453	45	266	3915	4226
Crest of Hill	0	12	49	81	142	0	13	69	82
Bottom of Hill	1	7	41	81	130	1	9	52	62
Slope	10	59	443	783	1295	10	69	543	622
Unknown	0	2	4	30	36	0	2	4	6
Sub-total	54	322	3703	6977	11056	56	359	4583	4998
RURAL									
Level	34	159	503	978	1674	39	196	719	954
Crest of Hill	0	13	35	40	88	0	19	47	66
Bottom of Hill	0	6	18	37	61	0	7	24	31
Slope	5	31	111	186	333	5	39	137	181
Unknown	0	2	4	19	25	0	2	5	7
Sub-total	39	211	671	1260	2181	44	263	932	1239
TOTAL	93	533	4374	8237	13237	100	622	5515	6237

Table 20: Crashes and Casualties by Horizontal Alignment, Region & Severity

Vertical Alignment & Region	Crashes					Casualties			
	Fatal Crashes	Serious Injury Crashes	Minor Injury Crashes	Property Damage Crashes	ALL CRASHES	Fatalities	Serious Injuries	Minor Injuries	ALL CASUALTIES
METROPOLITAN									
Straight	46	251	3319	6257	9873	47	279	4108	4434
Curved, View Obscured	3	19	104	208	334	4	23	125	152
Curved, View Open	5	50	280	507	842	5	55	350	410
Unknown	0	2	0	5	7	0	2	0	2
Sub-total	54	322	3703	6977	11056	56	359	4583	4998
RURAL									
Straight	22	144	467	961	1594	25	181	662	868
Curved, View Obscured	3	28	71	97	199	3	35	99	137
Curved, View Open	14	39	133	199	385	16	47	171	234
Unknown	0	0	0	3	3	0	0	0	0
Sub-total	39	211	671	1260	2181	44	263	932	1239
TOTAL	93	533	4374	8237	13237	100	622	5515	6237

Table 21: Crashes and Casualties by Road Moisture, Region & Severity

Road Moisture & Region	Crashes					Casualties			
	Fatal Crashes	Serious Injury Crashes	Minor Injury Crashes	Property Damage Crashes	ALL CRASHES	Fatalities	Serious Injuries	Minor Injuries	ALL CASUALTIES
METROPOLITAN									
Dry	46	276	3274	6093	9689	47	307	4042	4396
Wet	8	43	422	862	1335	9	49	534	592
Unknown	0	3	7	22	32	0	3	7	10
Sub-total	54	322	3703	6977	11056	56	359	4583	4998
RURAL									
Dry	36	183	587	1071	1877	41	232	806	1079
Wet	3	25	83	181	292	3	28	124	155
Unknown	0	3	1	8	12	0	3	2	5
Sub-total	39	211	671	1260	2181	44	263	932	1239
TOTAL	93	533	4374	8237	13237	100	622	5515	6237

Table 22: Crashes and Casualties by Route and Severity

Route	Crashes					Casualties			
	Fatal Crashes	Serious Injury Crashes	Minor Injury Crashes	Property Damage Crashes	ALL CRASHES	Fatalities	Serious Injuries	Minor Injuries	ALL CASUALTIES
Anzac Hwy	3	6	57	78	144	3	7	66	76
Barrier Hwy	1	1	7	13	22	1	4	11	16
Cudlee Creek - Lobethal Rd	0	2	3	4	9	0	2	3	5
Dukes Hwy	2	5	7	21	35	2	9	13	24
Eyre Hwy	1	5	8	26	40	1	6	15	22
Gorge Rd	0	2	21	48	71	0	2	24	26
Lincoln Hwy	1	0	9	17	27	1	0	11	12
Lyndoch - Chain of Ponds Rd	0	2	8	6	16	0	2	9	11
Lwr North East Rd	0	0	4	7	11	0	0	5	5
Horrocks Hwy	0	3	17	21	41	0	5	25	30
Main North Rd (M) ¹	3	12	196	315	526	3	13	266	282
North East Rd	0	7	103	146	256	0	8	120	128
Main South Rd	0	4	15	17	36	0	5	21	26
Pt Wakefield Rd/Augusta Hwy	7	11	39	70	127	9	22	67	98
Princess Hwy	1	7	17	36	61	1	10	26	37
Ridloch Hwy	0	4	4	24	32	0	5	9	14
South Eastern Fwy ²	2	11	27	83	123	2	11	49	62
Southern Expwy	0	1	25	40	66	0	1	31	32
Stuart Hwy	0	2	10	17	29	0	2	16	18
Sturt Hwy	0	4	21	40	65	0	4	29	33
Tea Tree Gully - Mannum Rd	2	4	20	25	51	2	5	24	31
Victor Harbor Rd	0	4	17	33	54	0	5	22	27

M = Metropolitan Adelaide

¹ From Fitzroy Terrace to Gawler Bypass.

² Does not include the intersection with Cross Road

Table 23a: Crashes and Casualties by Local Government Area & Severity, Metropolitan Adelaide: Council Roads

Local Government Area	Crashes					Casualties			
	Fatal Crashes	Serious Injury Crashes	Minor Injury Crashes	Property Damage Crashes	ALL CRASHES	Fatalities	Serious Injuries	Minor Injuries	ALL CASUALTIES
Adelaide Hills Council, the	2	6	36	81	125	2	6	42	50
Adelaide, city of	2	13	173	323	511	2	13	192	207
Barossa Council, the	1	0	0	2	3	1	0	0	1
Burnside, city of	1	4	30	47	82	1	4	32	37
Campbelltown, cc	0	1	17	60	78	0	1	19	20
Charles Sturt, city of	1	10	66	173	250	1	12	72	85
Gawler, town of	0	0	13	27	40	0	0	20	20
Holdfast Bay, city of	1	0	26	79	106	1	0	33	34
Light Regional Council	0	0	3	4	7	0	0	3	3
Mallala, dc	0	2	5	5	12	0	2	6	8
Marion, cc	2	4	29	112	147	2	4	39	45
Mitcham, cc	0	1	36	109	146	0	1	40	41
Mt Barker, dc	1	2	16	36	55	1	2	20	23
Norwood, Payneham and St Peters, cc	0	0	27	64	91	0	0	29	29
Onkaparinga, city of	3	17	127	218	365	3	20	152	175
Playford, city of	1	12	124	207	344	1	14	178	193
Prospect, city of	0	1	9	29	39	0	1	9	10
Pt Adelaide Enfield, city of	2	6	72	195	275	2	6	85	93
Salisbury, city of	3	5	91	203	302	3	5	100	108
Tea Tree Gully, city of	0	2	46	93	141	0	2	56	58
Unley, city of	0	3	25	73	101	0	3	33	36
Walkerville, tc	0	3	7	18	28	0	3	9	12
West Torrens, city of	0	5	44	88	137	0	5	48	53
TOTAL	20	97	1022	2246	3385	20	104	1217	1341

Table 23b: Crashes and Casualties by Local Government Area & Severity, Metropolitan Adelaide: DPTI Roads

Local Government Area	Crashes				Casualties				
	Fatal Crashes	Serious Injury Crashes	Minor Injury Crashes	Property Damage Crashes	ALL CRASHES	Fatalities	Serious Injuries	Minor Injuries	ALL CASUALTIES
Adelaide Hills Council, the	3	24	112	178	317	3	26	143	172
Adelaide, city of	0	8	69	109	186	0	8	82	90
Barossa Council, the	0	1	0	2	3	0	1	0	1
Burnside, city of	2	6	106	140	254	2	7	124	133
Campbelltown, cc	0	7	73	133	213	0	8	94	102
Charles Sturt, city of	1	21	244	446	712	1	23	287	311
Gawler, town of	1	2	45	51	99	1	2	75	78
Holdfast Bay, city of	1	7	60	108	176	1	8	71	80
Light Regional Council	1	2	10	16	29	1	6	14	21
Mallala, dc	1	0	9	10	20	2	0	15	17
Marion, cc	0	10	183	319	512	0	10	232	242
Mitcham, cc	2	16	148	281	447	2	18	180	200
Mt Barker, dc	0	9	41	105	155	0	10	59	69
Norwood, Payneham and St Peters, cc	1	11	173	331	516	1	11	193	205
Onkaparinga, city of	2	17	165	256	440	2	21	212	235
Playford, city of	4	16	141	213	374	4	18	213	235
Prospect, city of	1	3	87	149	240	1	3	101	105
Pt Adelaide Enfield, city of	2	21	290	646	959	2	22	352	376
Salisbury, city of	5	22	300	506	833	6	25	411	442
Tea Tree Gully, city of	2	5	115	153	275	2	7	137	146
Unley, city of	0	6	87	150	243	0	6	108	114
Walkerville, tc	0	2	42	82	126	0	2	50	52
West Torrens, city of	5	9	181	347	542	5	13	213	231
TOTAL	34	225	2681	4731	7671	36	255	3366	3657

Table 23c: Crashes and Casualties by Local Government Area & Severity, Metropolitan Adelaide: All Roads

Local Government Area	Crashes					Casualties			
	Fatal Crashes	Serious Injury Crashes	Minor Injury Crashes	Property Damage Crashes	ALL CRASHES	Fatalities	Serious Injuries	Minor Injuries	ALL CASUALTIES
Adelaide Hills Council, the	5	30	148	259	442	5	32	185	222
Adelaide, city of	2	21	242	432	697	2	21	274	297
Barossa Council, the	1	1	0	4	6	1	1	0	2
Burnside, city of	3	10	136	187	336	3	11	156	170
Campbelltown, cc	0	8	90	193	291	0	9	113	122
Charles Sturt, city of	2	31	310	619	962	2	35	359	396
Gawler, town of	1	2	58	78	139	1	2	95	98
Holdfast Bay, city of	2	7	86	187	282	2	8	104	114
Light Regional Council	1	2	13	20	36	1	6	17	24
Mallala, dc	1	2	14	15	32	2	2	21	25
Marion, cc	2	14	212	431	659	2	14	271	287
Mitcham, cc	2	17	184	390	593	2	19	220	241
Mt Barker, dc	1	11	57	141	210	1	12	79	92
Norwood, Payneham and St Peters, cc	1	11	200	395	607	1	11	222	234
Onkaparinga, city of	5	34	292	474	805	5	41	364	410
Playford, city of	5	28	265	420	718	5	32	391	428
Prospect, city of	1	4	96	178	279	1	4	110	115
Pt Adelaide Enfield, city of	4	27	362	841	1234	4	28	437	469
Salisbury, city of	8	27	391	709	1135	9	30	511	550
Tea Tree Gully, city of	2	7	161	246	416	2	9	193	204
Unley, city of	0	9	112	223	344	0	9	141	150
Walkerville, tc	0	5	49	100	154	0	5	59	64
West Torrens, city of	5	14	225	435	679	5	18	261	284
TOTAL	54	322	3703	6977	11056	56	359	4583	4998

Table 24a: Crashes and Casualties by Local Government Area & Severity, Rural: Council Roads

Local Government Area	Crashes					Casualties			
	Fatal Crashes	Serious Injury Crashes	Minor Injury Crashes	Property Damage Crashes	ALL CRASHES	Fatalities	Serious Injuries	Minor Injuries	ALL CASUALTIES
Alexandrina Council	1	8	24	37	70	2	10	30	42
Anangu Pitjantjatjara Yankunytjatjara	1	0	3	7	11	1	0	3	4
Barossa Council, the	3	3	10	19	35	3	3	16	22
Barunga West, dc	0	0	1	3	4	0	0	1	1
Berri Barmera Council, the	0	3	4	21	28	0	3	6	9
Ceduna, dc	0	0	3	1	4	0	0	4	4
Clare and Gilbert Valleys, dc	0	2	10	7	19	0	2	11	13
Cleve, dc	0	1	0	0	1	0	1	0	1
Cooper Pedy, dc	0	0	1	3	4	0	0	1	1
Coorong, dc	0	3	6	11	20	0	3	6	9
Copper Coast, dc	0	1	11	19	31	0	1	24	25
Elliston, dc	0	1	1	0	2	0	2	1	3
Flinders Ranges Council, the	0	2	0	3	5	0	2	0	2
Franklin Harbor, dc	0	0	2	0	2	0	0	3	3
Goyder, rc	0	2	2	4	8	0	3	3	6
Grant, dc	0	5	7	15	27	0	7	9	16
Kangaroo Island Council	0	2	4	8	14	0	5	6	11
Karoonda East Murray, dc	0	1	1	1	3	0	1	1	2
Kimba, dc	0	0	1	0	1	0	0	1	1
Kingston, dc	0	0	2	2	4	0	0	2	2
Light Regional Council	1	2	9	13	25	1	6	12	19
Lower Eyre Peninsula, dc	0	3	2	9	14	0	3	2	5
Loxton Waikerie, dc	1	1	3	4	9	1	2	3	6
Mallala, dc	0	2	2	8	12	0	2	3	5
Mid Murray, dc	0	5	7	12	24	0	5	10	15
Sub-total	7	47	116	207	377	8	61	158	227

Table 24a: Crashes and Casualties by Local Government Area & Severity, Rural: Council Roads (cont.)

Local Government Area	Crashes					Casualties			
	Fatal Crashes	Serious Injury Crashes	Minor Injury Crashes	Property Damage Crashes	ALL CRASHES	Fatalities	Serious Injuries	Minor Injuries	ALL CASUALTIES
Mt Gambier, cc	0	2	16	46	64	0	2	19	21
Mt Remarkable, dc	0	0	0	2	2	0	0	0	0
Murray Bridge, rc	0	1	15	40	56	0	1	17	18
Naracoorte and Lucindale, dc	0	0	7	10	17	0	0	11	11
Northern Areas, dc	0	2	3	2	7	0	2	5	7
Orroroo and Carrieton, dc	0	0	1	0	1	0	0	1	1
Pastoral Unincorporated	0	2	2	1	5	0	2	2	4
Peterborough, dc	0	0	3	1	4	0	0	4	4
Pt Augusta, cc	0	1	8	27	36	0	1	11	12
Pt Lincoln, cc	0	0	6	17	23	0	0	7	7
Pt Pirie, city and dc	1	1	13	34	49	1	2	13	16
Renmark Paringa, dc	0	1	11	11	23	0	1	13	14
Robe, dc	0	1	1	0	2	0	1	1	2
Roxby Downs, mc	0	1	1	3	5	0	1	1	2
Southern Mallee, dc	0	1	1	2	4	0	1	1	2
Streaky Bay, dc	0	0	1	1	2	0	0	2	2
Tatiara, dc	1	4	7	5	17	1	4	8	13
Tumby Bay, dc	1	2	0	3	6	1	2	1	4
Victor Harbor, dc	0	4	9	10	23	0	4	14	18
Wakefield, rc	0	1	4	7	12	0	2	10	12
Wattle Range Council	1	5	10	13	29	1	5	13	19
Whyalla, cc	0	3	15	39	57	0	3	18	21
Wudinna (dc Le Hunte), dc	0	1	0	2	3	0	1	0	1
Yankalilla, dc	0	4	6	12	22	0	4	8	12
Yorke Peninsula Council	0	1	9	19	29	0	1	14	15
Sub-total	4	38	149	307	498	4	40	194	238
TOTAL	11	85	265	514	875	12	101	352	465

Table 24b: Crashes and Casualties by Local Government Area & Severity, Rural: DPTI Roads

Local Government Area	Crashes					Casualties			
	Fatal Crashes	Serious Injury Crashes	Minor Injury Crashes	Property Damage Crashes	ALL CRASHES	Fatalities	Serious Injuries	Minor Injuries	ALL CASUALTIES
Alexandrina Council	1	12	34	67	114	1	19	43	63
Anangu Pitjantjatjara Yankunytjatjara	0	1	1	1	3	0	1	2	3
Barossa Council, the	4	4	18	43	69	5	6	23	34
Barunga West, dc	0	1	6	9	16	0	1	6	7
Berri Barmera Council, the	0	0	9	10	19	0	0	11	11
Ceduna, dc	0	2	3	5	10	0	3	5	8
Clare and Gilbert Valleys, dc	0	3	22	16	41	0	5	30	35
Cleve, dc	0	1	2	1	4	0	1	2	3
Coorong, dc	0	0	1	1	2	0	0	1	1
Copper Coast, dc	3	4	19	28	54	3	8	27	38
Elliston, dc	0	3	11	10	24	0	3	16	19
Flinders Ranges Council, the	0	0	0	2	2	0	0	0	0
Franklin Harbor, dc	0	0	3	4	7	0	0	4	4
Goyder, rc	0	0	0	1	1	0	0	0	0
Grant, dc	1	2	2	14	19	1	5	2	8
Kangaroo Island Council	1	5	14	14	34	1	5	21	27
Karoonda east murray, dc	1	0	6	7	14	1	0	8	9
Kimba, dc	0	1	1	5	7	0	1	2	3
Kingston, dc	0	0	1	1	2	0	0	1	1
Light Regional Council	0	2	1	6	9	0	2	4	6
Lower Eyre Peninsula, dc	0	5	23	22	50	0	5	29	34
Loxton Waikerie, dc	0	0	6	9	15	0	0	6	6
Mallala, dc	1	3	10	28	42	1	4	15	20
Mid Murray, dc	2	4	11	12	29	2	8	18	28
Sub-total	0	2	18	29	49	0	2	20	22

Table 24b: Crashes and Casualties by Local Government Area & Severity, Rural: DPTI Roads (cont.)

Local Government Area	Crashes					Casualties			
	Fatal Crashes	Serious Injury Crashes	Minor Injury Crashes	Property Damage Crashes	ALL CRASHES	Fatalities	Serious Injuries	Minor Injuries	ALL CASUALTIES
Mt Gambier, cc	0	5	8	40	53	0	5	12	17
Mt Remarkable, dc	1	0	8	8	17	1	0	14	15
Murray Bridge, rc	2	7	21	41	71	2	7	35	44
Naracoorte and Lucindale, dc	1	3	7	15	26	1	3	10	14
Northern Areas, dc	0	3	4	7	14	0	3	4	7
Orroroo and Carrieton, dc	0	1	0	2	3	0	1	0	1
Pastoral Unincorporated	2	18	31	48	99	2	20	47	69
Peterborough, dc	0	0	0	6	6	0	0	0	0
Pt Augusta, cc	0	0	8	21	29	0	0	8	8
Pt Lincoln, cc	0	2	4	14	20	0	2	4	6
Pt Pirie, city and dc	1	5	8	21	35	1	8	12	21
Renmark Paringa, dc	0	0	6	11	17	0	0	9	9
Robe, dc	0	1	5	5	11	0	1	8	9
Roxby Downs, mc	0	1	0	1	2	0	1	0	1
Southern Mallee, dc	0	0	4	6	10	0	0	7	7
Streaky Bay, dc	1	0	1	4	6	1	0	2	3
Tatiara, dc	0	5	6	18	29	0	6	12	18
Tumby Bay, dc	0	0	4	3	7	0	0	5	5
Unincorporated (eastern)	0	0	0	1	1	0	0	0	0
Victor Harbor, dc	0	4	10	20	34	0	4	14	18
Wakefield, rc	2	6	13	30	51	3	10	26	39
Wattle Range Council	1	4	9	25	39	1	5	17	23
Whyalla, cc	1	0	6	15	22	1	0	8	9
Wudinna (dc Le Hunte), dc	0	0	3	5	8	0	0	3	3
Yankalilla, dc	1	4	13	12	30	1	5	20	26
Yorke Peninsula Council	1	2	5	22	30	3	2	7	12
Sub-total	14	71	184	401	670	17	83	284	384
TOTAL	28	126	406	746	1306	32	162	580	774

Table 24c: Crashes and Casualties by Local Government Area & Severity, Rural: All Roads

Local Government Area	Crashes					Casualties			
	Fatal Crashes	Serious Injury Crashes	Minor Injury Crashes	Property Damage Crashes	ALL CRASHES	Fatalities	Serious Injuries	Minor Injuries	ALL CASUALTIES
Alexandrina Council	2	20	58	104	184	3	29	73	105
Anangu Pitjantjatjara Yankunytjatjara	1	1	4	8	14	1	1	5	7
Barossa Council, the	7	7	28	62	104	8	9	39	56
Barunga West, dc	0	1	7	12	20	0	1	7	8
Berri Barmera Council, the	0	3	13	31	47	0	3	17	20
Ceduna, dc	0	2	6	6	14	0	3	9	12
Clare and Gilbert Valleys, dc	0	5	32	23	60	0	7	41	48
Cleve, dc	0	2	2	1	5	0	2	2	4
Cooper Pedy, dc	0	0	2	4	6	0	0	2	2
Coorong, dc	3	7	25	39	74	3	11	33	47
Copper Coast, dc	0	4	22	29	55	0	4	40	44
Elliston, dc	0	1	1	2	4	0	2	1	3
Flinders Ranges Council, the	0	2	3	7	12	0	2	4	6
Franklin Harbor, dc	0	0	2	1	3	0	0	3	3
Goyder, rc	1	4	4	18	27	1	8	5	14
Grant, dc	1	10	21	29	61	1	12	30	43
Kangaroo Island Council	1	2	10	15	28	1	5	14	20
Karoonda East Murray, dc	0	2	2	6	10	0	2	3	5
Kimba, dc	0	0	2	1	3	0	0	2	2
Kingston, dc	0	2	3	8	13	0	2	6	8
Light Regional Council	1	7	32	35	75	1	11	41	53
Lower Eyre Peninsula, dc	0	3	8	18	29	0	3	8	11
Loxton Waikerie, dc	2	4	13	32	51	2	6	18	26
Mallala, dc	2	6	13	20	41	2	10	21	33
Mid Murray, dc	0	7	25	41	73	0	7	30	37
Sub-total	21	102	338	552	1013	23	140	454	617

Table 24c: Crashes and Casualties by Local Government Area & Severity, Rural: All Roads (cont.)

Local Government Area	Crashes					Casualties			
	Fatal Crashes	Serious Injury Crashes	Minor Injury Crashes	Property Damage Crashes	ALL CRASHES	Fatalities	Serious Injuries	Minor Injuries	ALL CASUALTIES
Mt Gambier, cc	0	7	24	86	117	0	7	31	38
Mt Remarkable, dc	1	0	8	10	19	1	0	14	15
Murray Bridge, rc	2	8	36	81	127	2	8	52	62
Naracoorte and Lucindale, dc	1	3	14	25	43	1	3	21	25
Northern Areas, dc	0	5	7	9	21	0	5	9	14
Orroroo and Carrieton, dc	0	1	1	2	4	0	1	1	2
Pastoral Unincorporated	2	20	33	49	104	2	22	49	73
Peterborough, dc	0	0	3	7	10	0	0	4	4
Pt Augusta, cc	0	1	16	48	65	0	1	19	20
Pt Lincoln, cc	0	2	10	31	43	0	2	11	13
Pt Pirie, city and dc	2	6	21	55	84	2	10	25	37
Renmark Paringa, dc	0	1	17	22	40	0	1	22	23
Robe, dc	0	2	6	5	13	0	2	9	11
Roxby Downs, mc	0	2	1	4	7	0	2	1	3
Southern Mallee, dc	0	1	5	8	14	0	1	8	9
Streaky Bay, dc	1	0	2	5	8	1	0	4	5
Tatiara, dc	1	9	13	23	46	1	10	20	31
Tumby Bay, dc	1	2	4	6	13	1	2	6	9
Unincorporated (eastern)	0	0	0	1	1	0	0	0	0
Victor Harbor, dc	0	8	19	30	57	0	8	28	36
Wakefield, rc	2	7	17	37	63	3	12	36	51
Wattle Range Council	2	9	19	38	68	2	10	30	42
Whyalla, cc	1	3	21	54	79	1	3	26	30
Wudinna (dc Le Hunte), dc	0	1	3	7	11	0	1	3	4
Yankalilla, dc	1	8	19	24	52	1	9	28	38
Yorke Peninsula Council	1	3	14	41	59	3	3	21	27
Sub-total	18	109	333	708	1168	21	123	478	622
TOTAL	39	211	671	1260	2181	44	263	932	1239

**Table 25: Top Intersections with highest number of Casualty Crashes
2017**

Intersection	Current Year	Previous Years			
	2017	2016	2015	2014	2013
Stebonheath Road - Womma Road	11	7	4	3	4
Churchill Road - Regency Road	11	3	6	6	7
Main North Road - Dalkeith Road	9	8	5	6	3
Regency Road - Main North Road	9	4	7	14	7
Torrens Road - Fitzroy Terrace	9	4	3	1	2
Fullarton Road - Dequetteville Terrace	8	8	13	10	6
Greenhill Road - Portrush Road	8	5	8	3	3
Peachey Road - Curtis Road	8	5	3	3	1
Sturt Road - Marion Road	8	6	5	5	10
Bolivar Road - Pt Wakefield Road	7	4	4	9	7
Rundle Street - The Parade West	7	0	4	1	2
Montague Road - Mcintyre Road	7	4	4	4	3
Grand Junction Road - North East Road	7	0	4	5	3
Mcintyre Road - Bridge Road	7	2	3	4	5
Maxwell Road - Main North Road	6	5	3	6	4
Glynburn Road - Montacute Road	6	7	4	5	8
Hampstead Road - Grand Junction Road	6	5	7	10	7
Main North Road - Darlington Street	6	2	0	0	0
Main North Road - Grand Junction Road	6	3	4	10	18
Main North Road - Midway Road	6	8	3	3	6
Muller Road - North East Road	6	4	3	4	4
Marion Road - Cross Road	6	5	4	7	3

Table 26: Motor Vehicles Involved in & Responsible for Crashes by Region and Severity

Vehicle Type & Region	Fatal Crashes		Serious Injury Crashes		Minor Injury Crashes		Property Damage Crashes		ALL CRASHES	
	Involved	Responsible	Involved	Responsible	Involved	Responsible	Involved	Responsible	Involved	Responsible
PASSENGER VEHICLES										
Metropolitan Adelaide	58	27	436	234	6294	3169	11516	5803	18304	9233
Rural	40	29	225	148	826	547	1538	979	2629	1703
Sub-total	98	56	661	382	7120	3716	13054	6782	20933	10936
LIGHT TRUCKS (>4.5 Tonnes)										
Metropolitan Adelaide	1	1	1	0	14	9	44	25	60	35
Rural	1	1	1	1	2	1	7	7	11	10
Sub-total	2	2	2	1	16	10	51	32	71	45
HEAVY VEHICLE¹										
Metropolitan Adelaide	6	2	17	3	138	88	986	592	1147	685
Rural	5	0	19	12	48	24	171	103	243	139
Sub-total	11	2	36	15	186	112	1157	695	1390	824
BUSES										
Metropolitan Adelaide	0	0	6	1	37	17	296	148	339	166
Rural	0	0	0	0	0	0	19	8	19	8
Sub-total	0	0	6	1	37	17	315	156	358	174
MOTORCYCLES										
Metropolitan Adelaide	16	10	62	39	321	175	276	143	675	367
Rural	9	8	47	32	60	52	44	26	160	118
Sub-total	25	18	109	71	381	227	320	169	835	485
BICYCLES										
Metropolitan Adelaide	2	1	49	24	440	113	300	88	791	226
Rural	0	0	4	1	24	11	14	3	42	15
Sub-total	2	1	53	25	464	124	314	91	833	241
OTHER VEHICLE TYPES										
Metropolitan Adelaide	2	1	5	2	15	5	91	45	113	53
Rural	0	0	3	3	12	9	20	10	35	22
Sub-total	2	1	8	5	27	14	111	55	148	75
ALL VEHICLE TYPES										
Metropolitan Adelaide	85	42	576	303	7259	3576	13509	6844	21429	10765
Rural	55	38	299	197	972	644	1813	1136	3139	2015
TOTAL	140	80	875	500	8231	4220	15322	7980	24568	12780

¹ Excludes Buses and other defined special vehicles

NOTE: Excludes data for crashes where responsibility not attributed to a road user. For example, responsibility not recorded or unriden animal responsible

Table 27: Crashes and Casualties by Vehicle Movement of Motor Vehicle Responsible and Severity (excl. Pedestrian)

Vehicle Movement of Responsible Unit	Crashes					Casualties			
	Fatal Crashes	Serious Injury Crashes	Minor Injury Crashes	Property Damage Crashes	ALL CRASHES	Fatalities	Serious Injuries	Minor Injuries	ALL CASUALTIES
Right Turn	11	69	751	1377	2208	13	86	1034	1133
Left Turn	2	21	285	479	787	2	23	324	349
U Turn	3	8	77	194	282	3	10	95	108
Swerving	0	21	163	612	796	0	22	187	209
Reversing	0	2	18	116	136	0	2	19	21
Stopped on Carriageway	0	0	4	5	9	0	0	4	4
Straight Ahead	57	348	2632	4589	7626	62	413	3346	3821
Entering Private Driveway	1	2	41	71	115	1	2	43	46
Leaving Private Driveway	0	9	131	249	389	0	9	160	169
Parked	0	1	21	33	55	0	1	22	23
Parking - Angle	0	0	5	6	11	0	0	5	5
Parking - Parallel	0	2	9	32	43	0	2	9	11
Unparking - Angle	1	2	10	10	23	1	2	12	15
Unparking - Parallel	0	4	25	80	109	0	5	28	33
Overtaking - on Right	5	11	38	86	140	5	11	52	68
Overtaking - on Left	0	0	10	38	48	0	0	12	12
Other	0	0	0	3	3	0	0	0	0
On Pedestrian Crossing	0	0	0	0	0	0	0	0	0
TOTAL	80	500	4220	7980	12780	87	588	5352	6027

NOTE: Excludes data for crashes where responsibility not attributed to a road user. For example, responsibility not recorded or unriden animal responsible

Table 28: Crashes and Casualties by Pedestrian Responsible, Movement and Severity

Pedestrian Movement	Crashes					Casualties			
	Fatal Crashes	Serious Injury Crashes	Minor Injury Crashes	Property Damage Crashes	ALL CRASHES	Fatalities	Serious Injuries	Minor Injuries	ALL CASUALTIES
Walking on Footpath	1	0	0	1	2	1	0	0	1
On Pedestrian Crossing	0	0	2	2	4	0	0	2	2
Alighted from Parked Vehicle	0	0	1	1	2	0	0	1	1
Walked from between Parked Vehicles	1	0	2	1	4	1	0	2	3
Walking on Road	1	3	13	10	27	1	3	14	18
Walking on Road - Against the Traffic	1	0	0	0	1	1	0	0	1
Pushing or Working on Vehicle	0	0	0	3	3	0	0	0	0
Playing on Roadway	0	0	1	4	5	0	0	1	1
Crossing without Control	7	13	67	38	125	7	13	70	90
Other (e.g. Police on Traffic Control)	1	0	0	0	1	1	0	0	1
Crossing with Traffic Signals	0	1	11	6	18	0	1	11	12
TOTAL	12	17	97	66	192	12	17	101	130

Table 29: Crashes by Motor Vehicle Type Involved¹ and Severity

Type of Vehicle ¹	Fatal Crashes	Serious Injury Crashes	Minor Injury Crashes	Property Damage Crashes	ALL CRASHES
Passenger Vehicle	74	432	4066	7927	12499
Light Truck (<= 4.5 Tonnes)	2	2	16	51	71
Heavy Truck	13	37	204	1217	1471
Buses	0	6	37	312	355
Motorcycles / Scooters	24	106	378	314	822
Bicycles	2	43	444	310	799
Other	0	2	3	3	8

Table 30: Crashes and Casualties by Speed Involvement² and Severity

Speed Involvement ² & Region	Crashes					Casualties			
	Fatal Crashes	Serious Injury Crashes	Minor Injury Crashes	Property Damage Crashes	ALL CRASHES	Fatalities	Serious Injuries	Minor Injuries	ALL CASUALTIES
METROPOLITAN									
Yes	19	63	300	539	921	19	79	378	476
No	35	259	3403	6438	10135	37	280	4205	4522
Sub-total	54	322	3703	6977	11056	56	359	4583	4998
RURAL									
Yes	7	65	183	270	525	8	73	245	326
No	32	146	488	990	1656	36	190	687	913
Sub-total	39	211	671	1260	2181	44	263	932	1239
TOTAL	93	533	4374	8237	13237	100	622	5515	6237

¹ The vehicle type categories are not mutually exclusive and must not be added together. It is where the crash has involved at least one of the vehicle types. Where one crash has involved two or more of the same vehicle type, then it has been counted once

² Speed contribution definition is located under **Definitions & Explanations**

ROAD CASUALTIES IN 2017

Road Users
Seatbelts & Helmets
Age & Sex Distribution
Alcohol
Drug
Licence
Involvement & Responsibility

Table 31: Casualties by Road User Type, Severity, Age and Sex

Road User Types	Sex	0-15			16-19			20-24			25-29			30-39			40-49			50-59			60-69			70+			Unknown			ALL CASUALTIES		
		F	SI	MI	F	SI	MI	F	SI	MI	F	SI	MI	F	SI	MI	F	SI	MI	F	SI	MI	F	SI	MI	F	SI	MI	F	SI	MI			
VEHICLE OCCUPANT																																		
Driver	M	0	1	1	4	8	113	4	15	144	4	19	163	2	30	270	3	25	257	8	24	183	4	20	133	6	38	152	0	3	70	35	183	1486
	F	0	0	3	2	9	158	0	20	221	0	8	212	0	21	320	1	15	307	0	17	276	0	10	159	8	24	143	0	6	58	11	130	1857
	Subtotal¹	0	1	4	6	17	271	4	35	365	4	27	375	2	51	590	4	40	564	8	41	459	4	30	292	14	62	295	0	9	136	46	313	3351
Passenger	M	1	10	134	0	11	41	2	4	44	1	4	31	1	3	24	0	4	19	0	4	18	0	0	12	1	10	21	0	5	30	6	55	374
	F	0	10	180	1	4	74	1	4	53	0	7	46	1	4	62	0	5	60	0	6	60	1	6	57	1	18	73	0	2	41	5	66	706
	Subtotal¹	1	20	314	1	15	115	3	8	97	1	11	77	2	7	86	0	9	79	0	10	78	1	6	69	2	28	94	0	7	73	11	121	1082
MOTORCYCLIST																																		
Rider	M	0	1	2	1	9	51	5	7	55	3	7	44	3	12	49	3	22	53	2	18	53	3	12	31	3	6	3	0	5	13	23	99	354
	F	0	0	0	0	0	4	0	1	2	0	0	3	1	0	7	0	1	1	0	3	4	0	1	0	0	0	0	0	0	2	1	6	23
	Subtotal¹	0	1	2	1	9	55	5	8	57	3	7	47	4	12	56	3	23	54	2	21	57	3	13	31	3	6	3	0	5	15	24	105	377
Pillion Passenger	M	0	0	1	0	0	0	0	0	0	0	0	0	1	0	0	0	1	0	0	0	0	0	1	0	0	0	0	0	0	0	1	3	
	F	0	0	1	0	0	0	0	0	1	0	0	2	0	1	1	0	0	1	0	1	0	0	0	0	0	0	0	0	0	0	2	6	
	Subtotal¹	0	0	2	0	0	0	0	0	1	0	0	2	0	2	1	0	0	2	0	1	0	0	1	0	0	0	0	0	0	0	3	9	
PEDESTRIAN																																		
M	M	2	2	26	0	0	12	0	2	12	0	4	8	2	2	11	3	3	14	0	1	10	3	2	11	4	6	17	0	0	7	14	22	128
	F	0	1	21	0	1	9	0	1	11	0	1	9	0	1	10	1	2	11	0	2	19	0	3	9	2	7	16	0	0	3	3	19	118
	Subtotal¹	2	3	47	0	1	21	0	3	23	0	5	17	2	3	21	4	5	25	0	3	29	3	5	20	6	13	33	0	0	10	17	41	246
BICYCLIST																																		
M	M	0	1	38	0	1	22	0	2	22	0	3	27	0	3	66	0	4	60	1	10	58	1	6	32	0	1	9	0	0	10	2	31	344
	F	0	0	4	0	0	3	0	0	16	0	1	15	0	3	13	0	2	22	0	2	20	0	0	5	0	0	4	0	0	4	0	8	106
	Subtotal¹	0	1	42	0	1	25	0	2	38	0	4	42	0	6	79	0	6	82	1	12	78	1	6	37	0	1	13	0	0	14	2	39	450
OTHER ROAD USER																																		
M	M	0	0	0	0	0	0	0	0	0	0	0	0	0	0	0	0	0	0	0	0	0	0	0	0	0	0	0	0	0	0	0	0	
	F	0	0	0	0	0	0	0	0	0	0	0	0	0	0	0	0	0	0	0	0	0	0	0	0	0	0	0	0	0	0	0	0	
	Subtotal¹	0	0	0	0	0	0	0	0	0	0	0	0	0	0	0	0	0	0	0	0	0	0	0	0	0	0	0	0	0	0	0	0	0
ALL ROAD USERS																																		
M	M	3	15	202	5	29	239	11	30	277	8	37	273	8	51	420	9	58	404	11	57	322	11	40	220	14	61	202	0	13	130	80	391	2689
	F	0	11	209	3	14	248	1	26	304	0	17	287	2	30	413	2	25	402	0	31	379	1	20	230	11	49	236	0	8	108	20	231	2816
	TOTAL¹	3	26	411	8	43	487	12	56	581	8	54	560	10	81	833	11	83	806	11	88	701	12	60	450	25	110	438	0	21	248	100	622	5515

F – Fatality, SI – Serious Injury, MI – Minor Injury

¹ Unknown sex included

Table 32: Casualties by Unit Type and Severity

Unit Type	Fatalities	Serious Injuries	Minor Injuries	ALL CASUALTIES
Passenger Vehicle	55	417	4353	4825
Light Truck (<4.5Tonnes)	1	2	8	11
Heavy Vehicle ¹	1	12	55	68
Bus	0	3	17	20
Motorcycle	24	108	386	518
Bicycle	2	39	450	491
Pedestrian	17	41	246	304
Other	0	0	0	0
TOTAL	100	622	5515	6237

Table 33: Motor Vehicle Casualties by Position in Vehicle and Severity (excl. Bicycles)

Position in Vehicle	Fatalities	Serious Injuries	Minor Injuries	ALL CASUALTIES
FRONT SEAT PASSENGER				
Driver	46	313	3351	3710
Middle	0	0	6	6
Left	8	83	657	748
REAR SEAT PASSENGER				
Right	2	14	150	166
Middle	0	5	61	66
Left	1	18	183	202
CHILD NURSED				
Front	0	0	0	0
Rear	0	0	0	0
UTILITY/TRUCK				
Rear	0	1	0	1
VAN				
Passenger	0	0	1	1
BUS				
Passenger	0	1	14	15
MOTORCYCLE				
Rider	24	105	377	506
Passenger	0	3	9	12
TOWED VEHICLE				
Occupant	0	0	1	1
UNKNOWN/OTHER				
	0	0	9	9
Sub-total	81	543	4819	5443
TOTAL²	100	622	5515	6237

¹ Excludes Buses

² Includes not applicable user types

Table 34: Casualties by Road User Type, Safety Device and Severity

Road User Type & Safety Device Use ¹	Fatalities	Serious Injuries	Minor Injuries	ALL CASUALTIES
DRIVER				
Fitted – Worn	26	245	3115	3386
Fitted – Not Worn	16	20	39	75
Fitted – Unknown if Worn	3	47	195	245
Not Fitted	1	0	1	2
Unknown	0	1	1	2
Sub-total	46	313	3351	3710
PASSENGER				
Fitted – Worn	6	95	918	1019
Fitted – Not Worn	3	8	23	34
Fitted – Unknown if Worn	2	13	80	95
Child Restraint – Worn	0	4	51	55
Child Restraint– Not Worn	0	0	3	3
Not Fitted	0	0	6	6
Not Applicable	0	1	1	2
Unknown	0	0	0	0
Sub-total	11	121	1082	1214
MOTORCYCLE RIDER/PASSENGER				
Helmet Worn	23	102	373	498
Helmet – Not Worn	1	3	4	8
Unknown	0	3	9	12
Sub-total	24	108	386	518
BICYCLIST RIDER/PASSENGER				
Helmet Worn	2	38	433	473
Helmet – Not Worn	0	1	10	11
Unknown	0	0	7	7
Sub-total	2	39	450	491
ALL CASUALTIES				
Device Worn	57	484	4890	5431
Device Not Worn	21	32	86	139
Unknown/Not Applicable	5	65	293	363
Sub-total	83	581	5269	5933
TOTAL²	100	622	5515	6237

¹ Police reporting of safety device usage is often not based on direct observation by police officers and may be reliant upon statements by the casualties themselves or other involved parties.

² Includes not applicable safety device use/users (pedestrians)

Table 35: Driver and Motorcycle Rider Casualties with BAC

Severity	Sex	Blood Alcohol Concentration						Not Tested/ Unknown	TOTAL
		Negative	0.001- 0.049	0.050- 0.079	0.080- 0.149	0.150- 0.199	.200+		
Minor Injury	M	1068	11	13	41	30	17	660	1840
	F	1031	2	4	13	7	10	813	1880
	Sub-total¹	2103	13	17	54	37	27	1477	3728
Serious Injury	M	211	6	2	16	7	4	36	282
	F	104	1	0	2	3	0	26	136
	Sub-total¹	315	7	2	18	10	4	62	418
Fatalities	M	41	2	2	4	4	5	0	58
	F	11	1	0	0	0	0	0	12
	Sub-total¹	52	3	2	4	4	5	0	70
ALL CASUALTIES	M	1320	19	17	61	41	26	696	2180
	F	1146	4	4	15	10	10	839	2028
	TOTAL¹	2470	23	21	76	51	36	1539	4216

Table 36: Driver and Motorcycle Rider Casualties with Drugs

Age	Sex	Drugs					Combination of drugs ²	Not Tested/ Unknown	TOTAL
		Negative	THC	MDMA	Meth				
Minor Injury	M	1021	92	2	51	9	665	1840	
	F	1014	29	2	16	8	811	1880	
	Sub-total¹	2039	121	4	67	17	1480	3728	
Serious Injury	M	208	17	0	16	5	36	282	
	F	104	2	0	5	0	25	136	
	Sub-total¹	312	19	0	21	5	61	418	
Fatalities	M	38	6	0	5	2	0	51	
	F	14	2	0	1	1	1	19	
	Sub-total¹	52	8	0	6	3	1	70	
ALL CASUALTIES	M	1267	115	2	72	16	701	2173	
	F	1132	33	2	22	9	837	2035	
	TOTAL¹	2403	148	4	94	25	1542	4216	

¹ Unknown sex included

² Two or more of THC, MDMA or Meth

Table 37a: Road User Involved in & Responsible for Crashes by Age & Sex:
Fatal Crashes

Age	Sex	Drivers		Motorcycle Riders		Bicycle Riders		Pedestrians		Other Road Users		ALL ROAD USERS	
		Involved	Responsible	Involved	Responsible	Involved	Responsible	Involved	Responsible	Involved	Responsible	Involved	Responsible
0-15	M	0	0	0	0	0	0	2	1	0	0	2	1
	F	0	0	0	0	0	0	0	0	0	0	0	0
	Sub-total¹	0	0	0	0	0	0	2	1	0	0	2	1
16-19	M	7	6	1	1	0	0	0	0	0	0	8	7
	F	2	2	0	0	0	0	0	0	0	0	2	2
	Sub-total¹	9	8	1	1	0	0	0	0	0	0	10	9
20-24	M	8	6	6	5	0	0	0	0	0	0	14	11
	F	1	1	0	0	0	0	0	0	0	0	1	1
	Sub-total¹	9	7	6	5	0	0	0	0	0	0	15	12
25-29	M	9	6	3	0	0	0	0	0	0	0	12	6
	F	1	0	0	0	0	0	0	0	0	0	1	0
	Sub-total¹	10	6	3	0	0	0	0	0	0	0	13	6
30-39	M	9	4	3	3	0	0	2	2	0	0	14	9
	F	2	1	1	1	0	0	0	0	0	0	3	2
	Sub-total¹	11	5	4	4	0	0	2	2	0	0	17	11
40-49	M	12	4	3	2	0	0	3	2	0	0	18	8
	F	2	0	0	0	0	0	1	0	0	0	3	0
	Sub-total¹	14	4	3	2	0	0	4	2	0	0	21	8
50-59	M	19	8	2	2	1	1	0	0	0	0	22	11
	F	3	1	0	0	0	0	0	0	0	0	3	1
	Sub-total¹	22	9	2	2	1	1	0	0	0	0	25	12
60-69	M	9	4	3	1	1	0	3	3	0	0	16	8
	F	1	0	0	0	0	0	0	0	0	0	1	0
	Sub-total¹	10	4	3	1	1	0	3	3	0	0	17	8
70+	M	11	9	3	3	0	0	4	3	0	0	18	15
	F	8	7	0	0	0	0	2	1	0	0	10	8
	Sub-total¹	19	16	3	3	0	0	6	4	0	0	28	23
Unknown	M	0	0	0	0	0	0	0	0	0	0	0	0
	F	0	0	0	0	0	0	0	0	0	0	0	0
	Sub-total¹	1	1	0	0	0	0	0	0	0	0	1	1
ALL AGES	M	84	47	24	17	2	1	14	11	0	0	124	76
	F	20	12	1	1	0	0	3	1	0	0	24	14
	TOTAL¹	105	60	25	18	2	1	17	12	0	0	149	91

¹ Unknown sex included

Table 37b: Road User Involved in & Responsible for Crashes by Age & Sex:
Serious Injury Crashes

Age	Sex	Drivers		Motorcycle Riders		Bicycle Riders		Pedestrians		Other Road Users		ALL ROAD USERS	
		Involved	Responsible	Involved	Responsible	Involved	Responsible	Involved	Responsible	Involved	Responsible	Involved	Responsible
0-15	M	1	1	1	1	2	1	2	1	0	1	6	5
	F	0	0	0	0	0	0	1	1	0	0	1	1
	Sub-total¹	1	1	1	1	2	1	3	2	0	1	7	6
16-19	M	25	19	9	6	1	1	0	0	0	0	35	26
	F	18	10	0	0	1	0	1	1	0	0	20	11
	Sub-total¹	43	29	9	6	2	1	1	1	0	0	55	37
20-24	M	35	22	7	5	3	2	2	0	0	0	47	29
	F	30	15	1	0	0	0	1	1	0	0	32	16
	Sub-total¹	65	37	8	5	3	2	3	1	0	0	79	45
25-29	M	40	28	7	4	3	2	4	2	0	0	54	36
	F	20	12	0	0	1	0	2	0	0	0	23	12
	Sub-total¹	60	40	7	4	4	2	6	2	0	0	77	48
30-39	M	69	44	12	8	4	2	2	1	1	0	88	55
	F	39	21	0	0	3	2	2	0	0	0	44	23
	Sub-total¹	108	65	12	8	7	4	4	1	1	0	132	78
40-49	M	71	45	23	18	6	2	3	2	0	0	103	67
	F	47	22	1	1	3	1	2	2	0	0	53	26
	Sub-total¹	118	67	24	19	9	3	5	4	0	0	156	93
50-59	M	55	26	19	11	12	5	1	0	0	0	87	42
	F	34	19	3	1	4	2	2	0	0	0	43	22
	Sub-total¹	89	45	22	12	16	7	3	0	0	0	130	64
60-69	M	46	17	14	6	7	4	2	1	0	0	69	28
	F	23	11	1	1	0	0	4	0	0	0	28	12
	Sub-total¹	69	28	15	7	7	4	6	1	0	0	97	40
70+	M	61	46	6	6	1	0	6	3	0	0	74	55
	F	29	23	0	0	0	0	8	2	0	0	37	25
	Sub-total¹	90	69	6	6	1	0	14	5	0	0	111	80
Unknown	M	11	5	5	3	0	0	0	0	0	0	16	8
	F	10	8	0	0	0	0	0	0	0	0	10	8
	Sub-total¹	36	22	5	3	2	1	0	0	1	0	44	26
ALL AGES	M	414	253	103	68	39	19	22	10	1	1	579	351
	F	250	141	6	3	12	5	23	7	0	0	291	156
	TOTAL¹	679	403	109	71	53	25	45	17	2	1	888	517

¹ Unknown sex included

Table 37c: Road User Involved in & Responsible for Crashes by Age & Sex:
Minor Injury Crashes

Age	Sex	Drivers		Motorcycle Riders		Bicycle Riders		Pedestrians		Other Road Users		ALL ROAD USERS	
		Involved	Responsible	Involved	Responsible	Involved	Responsible	Involved	Responsible	Involved	Responsible	Involved	Responsible
0-15	M	2	1	2	2	39	15	26	15	0	2	69	35
	F	3	3	0	0	4	3	21	9	0	0	28	15
	Sub-total¹	5	4	2	2	43	18	47	24	0	2	97	50
16-19	M	238	175	52	36	22	7	12	7	0	0	324	225
	F	256	172	4	4	3	0	10	4	0	0	273	180
	Sub-total¹	494	347	56	40	25	7	22	11	0	0	597	405
20-24	M	399	256	55	37	22	7	12	2	0	0	488	302
	F	360	193	2	1	18	7	11	6	0	0	391	207
	Sub-total¹	760	450	57	38	40	14	23	8	0	0	880	510
25-29	M	393	229	45	24	29	4	8	3	0	0	475	260
	F	332	153	3	1	15	3	9	5	0	0	359	162
	Sub-total¹	725	382	48	25	44	7	17	8	0	0	834	422
30-39	M	685	355	49	27	66	11	12	5	0	0	812	398
	F	561	252	7	4	14	2	9	5	0	0	591	263
	Sub-total¹	1247	607	56	31	80	13	21	10	0	0	1404	661
40-49	M	612	284	52	28	63	18	14	6	0	0	741	336
	F	525	203	1	1	22	5	11	2	0	0	559	211
	Sub-total¹	1137	487	53	29	85	23	25	8	0	0	1300	547
50-59	M	457	210	54	31	57	16	11	4	0	0	579	261
	F	422	158	4	1	19	3	19	4	0	0	464	166
	Sub-total¹	879	368	58	32	76	19	30	8	0	0	1043	427
60-69	M	327	153	30	17	33	12	11	0	2	0	403	182
	F	254	111	0	0	5	2	8	3	0	0	267	116
	Sub-total¹	581	264	30	17	38	14	19	3	2	0	670	298
70+	M	300	207	3	2	10	5	17	6	0	0	330	220
	F	226	156	0	0	4	0	15	6	0	0	245	162
	Sub-total¹	526	363	3	2	14	5	32	12	0	0	575	382
Unknown	M	189	105	14	9	10	2	8	4	0	0	221	120
	F	94	51	2	1	4	0	3	1	0	0	103	53
	Sub-total¹	283	156	16	10	14	2	11	5	0	0	324	173
ALL AGES	M	3602	1975	356	213	351	97	131	52	2	2	4442	2339
	F	3033	1452	23	13	108	25	116	45	0	0	3280	1535
	TOTAL¹	6635	3427	381	227	461	123	248	97	3	2	8273	4316

¹ Unknown sex included

Table 37d: Road User Involved in & Responsible for Crashes by Age & Sex:
Property Damage Crashes

Age	Sex	Drivers		Motorcycle Riders		Bicycle Riders		Pedestrians		Other Road Users		ALL ROAD USERS	
		Involved	Responsible	Involved	Responsible	Involved	Responsible	Involved	Responsible	Involved	Responsible	Involved	Responsible
0-15	M	5	5	0	0	23	9	6	5	0	2	34	21
	F	0	0	0	0	3	0	1	0	0	0	4	0
	Sub-total¹	5	5	0	0	27	9	7	5	0	2	39	21
16-19	M	608	444	30	17	10	4	4	3	0	0	652	468
	F	421	282	1	1	4	0	0	0	0	0	426	283
	Sub-total¹	1029	726	31	18	14	4	4	3	0	0	1078	751
20-24	M	1033	670	35	18	12	3	2	0	0	0	1082	691
	F	693	391	4	2	3	0	4	3	0	0	704	396
	Sub-total¹	1726	1061	39	20	15	3	6	3	0	0	1786	1087
25-29	M	925	508	21	12	15	1	7	5	0	0	968	526
	F	564	293	2	1	5	0	2	1	0	0	573	295
	Sub-total¹	1489	801	23	13	20	1	9	6	0	0	1541	821
30-39	M	1456	748	42	25	43	11	6	2	0	0	1547	786
	F	883	437	3	1	8	1	4	2	0	0	898	441
	Sub-total¹	2341	1186	45	26	51	12	10	4	0	0	2447	1228
40-49	M	1322	644	35	17	34	10	8	4	0	0	1399	675
	F	741	334	7	4	3	1	4	0	0	0	755	339
	Sub-total¹	2063	978	42	21	37	11	12	4	0	0	2154	1014
50-59	M	1089	519	54	26	34	7	7	1	2	0	1186	553
	F	557	231	2	1	4	0	4	2	0	0	567	234
	Sub-total¹	1646	750	56	27	38	7	11	3	2	0	1753	787
60-69	M	763	357	18	9	12	3	4	1	0	0	797	370
	F	390	194	0	0	2	0	3	1	0	0	395	195
	Sub-total¹	1154	551	18	9	14	3	7	2	0	0	1193	565
70+	M	525	332	3	3	4	2	6	2	0	0	538	339
	F	348	242	0	0	0	0	2	2	0	0	350	244
	Sub-total¹	873	574	3	3	4	2	8	4	0	0	888	583
Unknown	M	276	171	8	6	18	8	14	8	0	0	316	193
	F	116	69	0	0	2	2	6	5	0	1	124	77
	Sub-total¹	1595	1070	45	32	90	39	50	32	1	3	1781	1176
ALL AGES	M	8002	4398	246	133	205	58	64	31	2	2	8519	4622
	F	4713	2473	19	10	34	4	30	16	0	1	4796	2504
	TOTAL¹	13921	7702	302	169	310	91	124	66	3	5	14660	8033

¹ Unknown sex included

Table 37e: Road User Involved in & Responsible for Crashes by Age & Sex:
All Crashes

Age	Sex	Drivers		Motorcycle Riders		Bicycle Riders		Pedestrians		Other Road Users		ALL ROAD USERS	
		Involved	Responsible	Involved	Responsible	Involved	Responsible	Involved	Responsible	Involved	Responsible	Involved	Responsible
0-15	M	8	7	3	3	64	25	36	22	0	5	111	62
	F	3	3	0	0	7	3	23	10	0	0	33	16
	Sub-total¹	11	10	3	3	72	28	59	32	0	5	145	78
16-19	M	878	644	92	60	33	12	16	10	0	0	1019	726
	F	697	466	5	5	8	0	11	5	0	0	721	476
	Sub-total¹	1575	1110	97	65	41	12	27	15	0	0	1740	1202
20-24	M	1475	954	103	65	37	12	16	2	0	0	1631	1033
	F	1084	600	7	3	21	7	16	10	0	0	1128	620
	Sub-total¹	2560	1555	110	68	58	19	32	12	0	0	2760	1654
25-29	M	1367	771	76	40	47	7	19	10	0	0	1509	828
	F	917	458	5	2	21	3	13	6	0	0	956	469
	Sub-total¹	2284	1229	81	42	68	10	32	16	0	0	2465	1297
30-39	M	2219	1151	106	63	113	24	22	10	1	0	2461	1248
	F	1485	711	11	6	25	5	15	7	0	0	1536	729
	Sub-total¹	3707	1863	117	69	138	29	37	17	1	0	4000	1978
40-49	M	2017	977	113	65	103	30	28	14	0	0	2261	1086
	F	1315	559	9	6	28	7	18	4	0	0	1370	576
	Sub-total¹	3332	1536	122	71	131	37	46	18	0	0	3631	1662
50-59	M	1620	763	129	70	104	29	19	5	2	0	1874	867
	F	1016	409	9	3	27	5	25	6	0	0	1077	423
	Sub-total¹	2636	1172	138	73	131	34	44	11	2	0	2951	1290
60-69	M	1145	531	65	33	53	19	20	5	2	0	1285	588
	F	668	316	1	1	7	2	15	4	0	0	691	323
	Sub-total¹	1814	847	66	34	60	21	35	9	2	0	1977	911
70+	M	897	594	15	14	15	7	33	14	0	0	960	629
	F	611	428	0	0	4	0	27	11	0	0	642	439
	Sub-total¹	1508	1022	15	14	19	7	60	25	0	0	1602	1068
Unknown	M	476	281	27	18	28	10	22	12	0	0	553	321
	F	220	128	2	1	6	2	9	6	0	1	237	138
	Sub-total¹	2458	1688	68	46	108	43	62	37	3	3	2699	1817
ALL AGES	M	12102	6673	729	431	597	175	231	104	5	5	13664	7388
	F	8016	4078	49	27	154	34	172	69	0	1	8391	4209
	TOTAL¹	21885	12032	817	485	826	240	434	192	8	8	23970	12957

¹ Unknown sex included

Table 38: Drivers & Motorcycle Riders Involved in & Responsible for Crashes by Licence Type & Severity

Licence Type	Fatal Crashes		Serious Injury Crashes		Minor Injury Crashes		Property Damage Crashes		ALL CRASHES	
	Involved	Responsible	Involved	Responsible	Involved	Responsible	Involved	Responsible	Involved	Responsible
Learner's Permit	4	3	17	9	118	79	154	111	293	202
Probationary Licence	2	2	5	3	78	50	110	75	195	130
Full Licence	94	50	598	335	5558	2698	10365	5237	16615	8320
Unlicensed	18	12	33	29	139	112	179	146	369	299
Conditional Licence	0	0	0	0	0	0	0	0	0	0
Provisional 1 Licence	6	5	30	27	327	247	657	499	1020	778
Provisional 2 Licence	4	4	40	25	424	276	915	613	1383	918
Disqualified Licence	1	1	3	3	8	6	14	11	26	21
Unknown	1	1	62	43	909	626	1829	1179	2801	1849
TOTAL	130	78	788	474	7561	4094	14223	7871	22702	12517

Table 39a: Drivers & Motorcycle Riders Responsible for Crashes by Licence Type and Age: Fatal Crashes

Age Group	Learner's Permit	Probationary Licence	Full Licence	Unlicensed	Conditional Licence	P1 Licence	P2 Licence	Disqualified	Unknown	Total
0-15	0	0	0	0	0	0	0	0	0	0
16-19	1	0	0	3	0	3	2	0	0	9
20-24	1	0	8	2	0	0	1	0	0	12
25-29	1	0	4	0	0	1	0	0	0	6
30-39	0	0	6	2	0	1	0	0	0	9
40-49	0	1	2	2	0	0	1	0	0	6
50-59	0	1	9	1	0	0	0	0	0	11
60-69	0	0	4	0	0	0	0	1	0	5
70+	0	0	17	2	0	0	0	0	0	19
Unknown	0	0	0	0	0	0	0	0	1	1
TOTAL	3	2	50	12	0	5	4	1	1	78

Table 39b: Drivers & Motorcycle Riders Responsible for Crashes by Licence Type and Age:
Serious Injury Crashes

Age Group	Learner's Permit	Probationary Licence	Full Licence	Uncensored	Conditional Licence	P1 Licence	P2 Licence	Disqualified	Unknown	Total
0-15	0	0	0	2	0	0	0	0	0	2
16-19	4	0	2	1	0	15	12	0	1	35
20-24	1	1	17	4	0	4	7	0	8	42
25-29	1	1	31	6	0	3	0	0	2	44
30-39	0	1	54	9	0	3	2	0	4	73
40-49	2	0	72	2	0	2	1	3	4	86
50-59	0	0	51	2	0	0	1	0	3	57
60-69	0	0	28	1	0	0	0	0	6	35
70+	0	0	71	1	0	0	0	0	3	75
Unknown	1	0	9	1	0	0	2	0	12	25
TOTAL	9	3	335	29	0	27	25	3	43	474

Table 39c: Drivers & Motorcycle Riders Responsible for Crashes by Licence Type and Age:
Minor Injury Crashes

Age Group	Learner's Permit	Probationary Licence	Full Licence	Uncensored	Conditional Licence	P1 Licence	P2 Licence	Disqualified	Unknown	Total
0-15	0	0	0	6	0	0	0	0	0	6
16-19	41	19	14	9	0	160	132	0	12	387
20-24	17	13	295	13	0	41	76	0	33	488
25-29	6	2	305	21	0	21	22	2	28	407
30-39	7	8	536	28	0	5	16	1	37	638
40-49	4	2	461	15	0	4	4	1	25	516
50-59	0	2	359	7	0	2	2	2	26	400
60-69	1	1	269	2	0	0	0	0	8	281
70+	0	0	348	6	0	0	0	0	11	365
Unknown	3	3	111	5	0	14	24	0	446	606
Total	79	50	2698	112	0	247	276	6	626	4094

Table 39d: Drivers & Motorcycle Riders Responsible for Crashes by Licence Type and Age:
Property Damage Crashes

Age Group	Learner's Permit	Probationary Licence	Full Licence	Unlicensed	Conditional Licence	P1 Licence	P2 Licence	Disqualified	Unknown	Total
0-15	0	0	0	5	0	0	0	0	0	5
16-19	55	18	44	10	0	331	262	1	23	744
20-24	23	10	691	21	0	81	193	0	62	1081
25-29	14	4	621	25	0	29	68	2	51	814
30-39	6	21	1002	38	0	25	45	7	68	1212
40-49	5	8	895	16	0	11	11	0	53	999
50-59	1	5	721	13	0	3	7	1	26	777
60-69	0	3	512	4	0	1	1	0	39	560
70+	1	1	549	2	0	0	1	0	23	577
Unknown	6	5	202	12	0	18	25	0	834	1102
Total	111	75	5237	146	0	499	613	11	1179	7871

Table 39e: Drivers & Motorcycle Riders Responsible for Crashes by Licence Type and Age:
All Crashes

Age Group	Learner's Permit	Probationary Licence	Full Licence	Unlicensed	Conditional Licence	P1 Licence	P2 Licence	Disqualified	Unknown	Total
0-15	0	0	0	13	0	0	0	0	0	13
16-19	101	37	60	23	0	509	408	1	36	1175
20-24	42	24	1011	40	0	126	277	0	103	1623
25-29	22	7	961	52	0	54	90	4	81	1271
30-39	13	30	1598	77	0	34	63	8	109	1932
40-49	11	11	1430	35	0	17	17	4	82	1607
50-59	1	8	1140	23	0	5	10	3	55	1245
60-69	1	4	813	7	0	1	1	1	53	881
70+	1	1	985	11	0	0	1	0	37	1036
Unknown	10	8	322	18	0	32	51	0	1293	1734
Total	202	130	8320	299	0	778	918	21	1849	12517

Reference Information for South Australia

Population
Licence
Vehicle Information

Table 40: Estimated Population¹ by Age and Sex

Age Group	Sex		ALL PERSONS
	Male	Female	
0-15	166710	158406	325116
16-19	42798	40997	83795
20-24	59464	56270	115734
25-29	58350	57186	115536
30-39	110605	111567	222172
40-49	110260	111069	221329
50-59	111119	114590	225709
60-69	96217	101426	197643
70+	97334	119180	216514
TOTAL	852857	870691	1723548

Table 41: Licence and Permit Holders² by Age and Sex

Age Group	Sex			ALL PERSONS
	Male	Female	Unknown	
16-19	31836	31076	70	62982
20-24	48,453	46180	39	94672
25-29	50852	48993	31	99876
30-39	104676	102495	52	207223
40-49	106683	104045	31	210759
50-59	109685	106268	19	215972
60-69	95,475	92158	9	187642
70+	85,133	73,974	6	159113
TOTAL	632793	605189	257	1238239

¹ Population as of June 2017. Source: Australian Bureau of Statistics, *Australian Demographic Statistics*, cat.no. 3101.0

² At December 2017. Source: TRUMPS database, Registration & Licensing Section, DPTI

Table 42: Motor Vehicle on Register¹ by Vehicle Type

Type of Vehicle	ALL VEHICLES
Cars & Station Wagons	1,066,890
Utilities	171,431
Panel Vans	36,290
Rigid & Other Trucks	41,852
Articulated Trucks	8,985
Other Commercials ²	14,168
Buses	4,144
Motorcycles	52,178
Other ³	46,582
TOTAL	1,442,520

Table 43: Vehicle Kilometres Travelled⁴ (VKT) by Vehicle Type

Type of Vehicle	TOTAL VKT ('000 000)
Passenger Vehicle	12,152
Light Commercials	3,313
Rigid Trucks	502
Articulated Trucks	657
Non-freight Carrying Trucks	8
Motorcycles	149
Buses	133
TOTAL	16,915

¹ At December 2017. Excludes trailers, caravans, plant and equipment. Source: TRUMPS database, Registration & Licensing Section, DPTI

² Includes animal transporter vehicle, drilling rig vehicle, earth moving vehicle, garbage truck, industrial vehicle, mobile crane vehicle, tanker vehicle

³ Includes ambulance, armoured vehicle, fork lift, land implement vehicle, golf buggy, tractors

⁴ Travel for the year ended June 2017. Source: Australian Bureau of Statistics, *Survey of Motor Vehicle Use*, cat. no. 9208.0